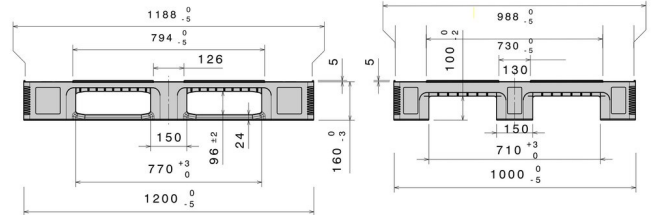


L3[®]
47.2" x 39.4"



Art.-Nr.: 83349881



Technical Data*1

Dimensions L x W x H	47.2 x 39.4 x 6.3" (1200 x 1000 x 160 mm)		
Weight (lbs)	57 kg		
Material*2	PE		

Load capacity (lbs)	 Static 16550 lbs	 Dynamic 4409.2 lbs	 In Racking System 4450 lbs
---------------------	--	---	--


Characteristics

Color: basalt grey / light blue
 Runners: 3, welded
 Reinforcement profiles: 5
 Rims: 0.2"
 Antislip: Palgrip[®] anti-slip strips on the top deck, Palgrip[®] anti-slip runners
 Temperature stability: -22°F to +104°F, briefly up to +194°F

Options

Rimoptions
 Transponder (RFID)
 Lid

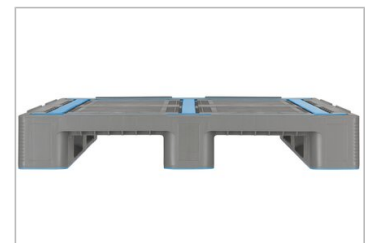
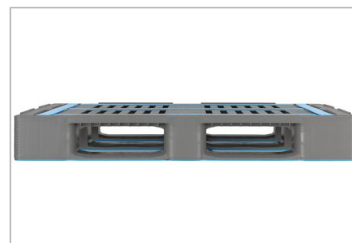
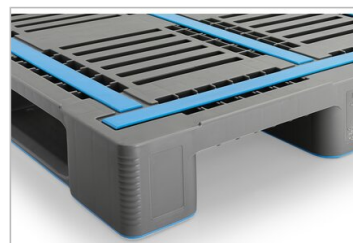
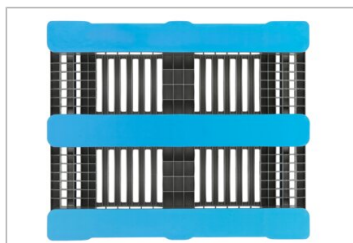
Loading quantities (Pcs / Approximate amount)

 Container	Container 20': 141	Container 40' High Cube: 340
	Container 40': 300	Conventional trailer 45' high cube container: 416

 Truck	MEGA-Trailer: 468	Jumbo: 504-540
---	--------------------------	-----------------------

Labelling

Customised printing and numbering available on request depending on quantity. Position upon consultation.



*1 All technical data include characteristic features, which have been tested under specially defined conditions. Varying data may result from different conditions of usage such as loading method, prevailing temperature and length of storage time. All data and specified information are subject to change without notice. Our service team is pleased to be at your disposal to check the special requirements of your individual application.
 *2 Our service team is pleased to be at your disposal if you require exact information about material compositions.
 *3 **Static load:** resistance to pressure on a flat ground surface and an evenly distributed load at a room temperature of approx. 68°F.
Dynamic load: on a forklift with an evenly distributed load at a room temperature of approx. 68°F.
In racking system: evenly distributed load (sacks) along the longitudinal sides. Resting on two supports for over 100 h at a room temperature of approx. 68°F.