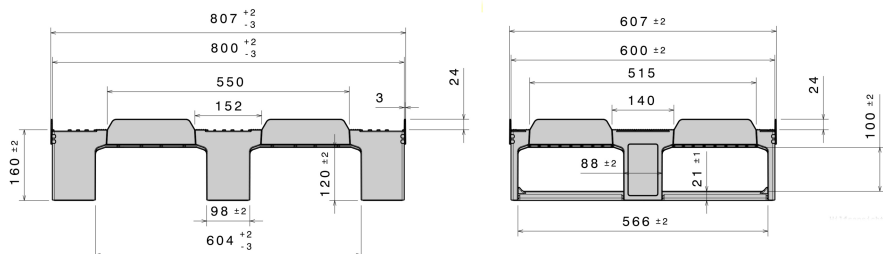




D2 ESD

800 x 600 mm



Art.-Nr.: 83510228

Technical Data*1

Dimensions L x W x H (mm)	800 x 600 x 160 mm		
Weight (kg)	8,5 kg		
Material*2	PP, ESD		

Load capacity (kg)*3	Static 2000 kg	Dynamic 500 kg	In Racking System
----------------------	--------------------------	--------------------------	--------------------------

Characteristics

Colour: black
 Runners: 3, unwelded
 Rims: 24 mm outside
 Antislip: Anti-slip plugs from the top to the underside of the deck
 Temperature stability: -30°C to +40°C, briefly up to +90°C
 ESD pallet
 Surface resistance of $\geq 1 \times 10^4$ Ohm to $< 1 \times 10^{11}$ Ohm

Options

Antislip
 Rimoptions
 Lid

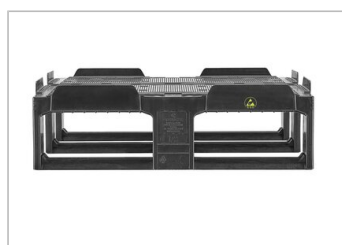
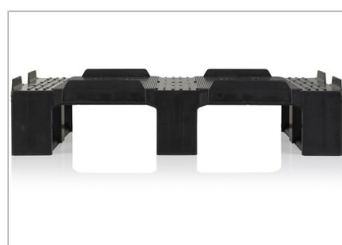
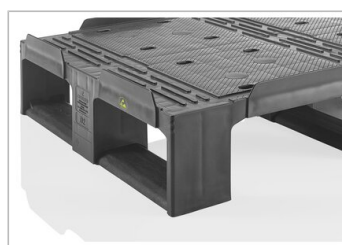
Loading quantities (Pcs / Approximate amount)

Container	Container 20': 384	Container 40' High Cube: 880
	Container 40': 780	Conventional trailer 45' high cube container: -

Truck	MEGA-Trailer: 1224	Jumbo: 1368
--------------	---------------------------	--------------------

Labelling

Customised printing and numbering available on request depending on quantity. Position upon consultation.



*1 All technical data include characteristic features, which have been tested under specially defined conditions. Varying data may result from different conditions of usage such as loading method, prevailing temperature and length of storage time. All data and specified information are subject to change without notice. Our service team is pleased to be at your disposal to check the special requirements of your individual application.

*2 Our service team is pleased to be at your disposal if you require exact information about material compositions.

*3 **Static load:** resistance to pressure on a flat ground surface and an evenly distributed load at a room temperature of approx. 20°C.

Dynamic load: on a forklift with an evenly distributed load at a room temperature of approx. 20°C.

In racking system: evenly distributed load (sacks) along the longitudinal sides. Resting on two supports for over 100 h at a room temperature of approx. 20°C.