

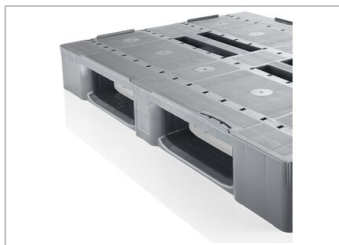
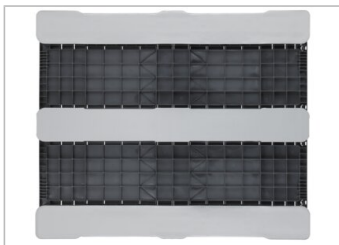


Art.-Nr.: 83229811

Technical Data*1			
Dimensions L x W x H (mm)	1200 X 1000 X 150		
Weight (kg)	18,0 kg		
Material*2	PE		
Load capacity (kg)*3	 Static 5000 kg	 Dynamic 1000 kg	 In Racking System 800 kg
Characteristics		Options	
Colour: basalt grey Runners: 3, welded Rims: 7 mm Temperature stability: -30 °C to +40 °C, briefly up to +90 °C		Transponder (RFID) Reinforcement profiles Rim options Palgrip® anti-slip runners Lid	
Loading quantities (Pcs / Approximate amount)			
 Container	Container 20': 140 Container 40': 330	Container 40' High Cube: 365 Conventional trailer 45' high cube container: 416	
 Truck	MEGA-Trailer: 494	Jumbo: 532-570	
Labelling			
Customised printing and numbering available on request depending on quantity. Position upon consultation.			



*1 All technical data include characteristic features, which have been tested under specially defined conditions. Varying data may result from different conditions of usage such as loading method, prevailing temperature and length of storage time. All data and specified information are subject to change without notice. Our service team is pleased to be at your disposal to check the special requirements of your individual application.

*2 Our service team is pleased to be at your disposal if you require exact information about material compositions.

*3 **Static load:** resistance to pressure on a flat ground surface and an evenly distributed load at a room temperature of approx. 20 °C.

Dynamic load: on a forklift with an evenly distributed load at a room temperature of approx. 20 °C.

In racking system: evenly distributed load (sacks) along the longitudinal sides. Resting on two supports for over 100 h at a room temperature of approx. 20 °C.