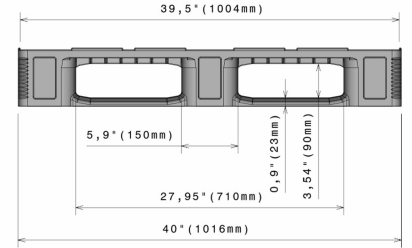
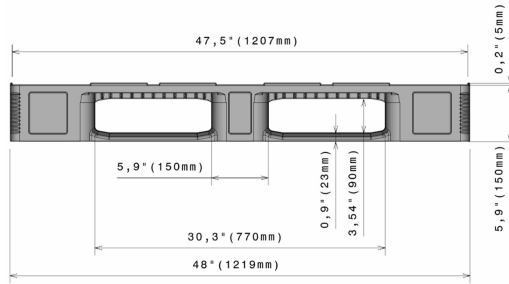


CR4-5

48" x 40"



Art.-Nr.: 83350851

Technical Data

Dimensions L x W x H (mm)	48 x 40 x 5.9" (1219 x 1016 x 150 mm)		
Weight (kg)	27.5 kg		
Material	PE		
Load capacity (kg)	Static 7500 kg	Dynamic 1500 kg	In Racking System 1400 kg

Characteristics Options

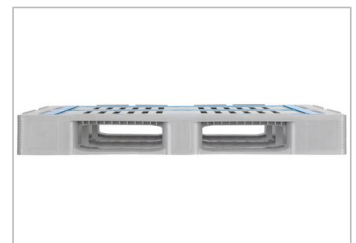
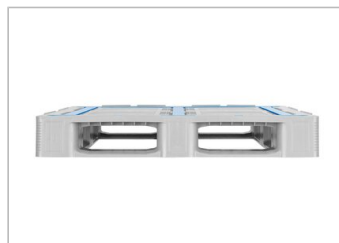
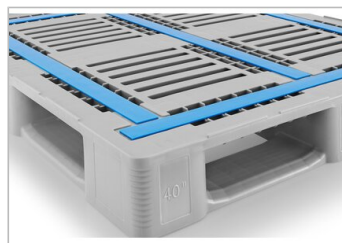
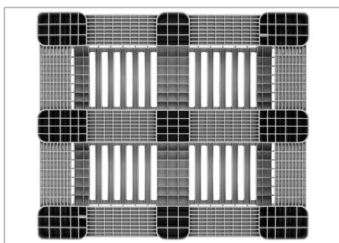
Colour: light grey / light blue	-
Runners: 5, unwelded	-
Reinforcement profiles: 5	-
Rims: 5 mm	-
Antislip: yes, 5 Palgrip® anti-slip strips on the top deck	-
Temperature stability: -30°C to +40°C, briefly up to +90°C	-

Loading quantities (Pcs / Approximate amount)

Container	Container 20': 154 Container 40': -	Container 40' High Cube: 358 Conventional trailer 45' high cube container: -
Truck	MEGA-Trailer: 494	Jumbo: 532-570

Labelling

Customised printing and numbering available on request depending on quantity. Position upon consultation.



*1 All technical data include characteristic features, which have been tested under specially defined conditions. Varying data may result from different conditions of usage such as loading method, prevailing temperature and length of storage time. All data and specified information are subject to change without notice. Our service team is pleased to be at your disposal to check the special requirements of your individual application.

*2 Our service team is pleased to be at your disposal if you require exact information about material compositions.

*3 **Static load:** resistance to pressure on a flat ground surface and an evenly distributed load at a room temperature of approx. 20°C.
Dynamic load: on a forklift with an evenly distributed load at a room temperature of approx. 20°C.
In racking system: evenly distributed load (sacks) along the longitudinal sides. Resting on two supports for over 100 h at a room temperature of approx. 20°C.