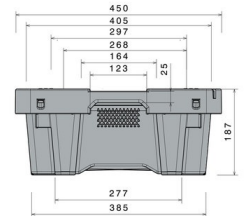
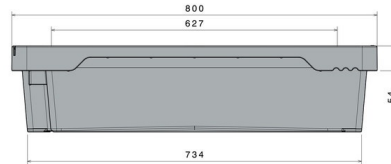
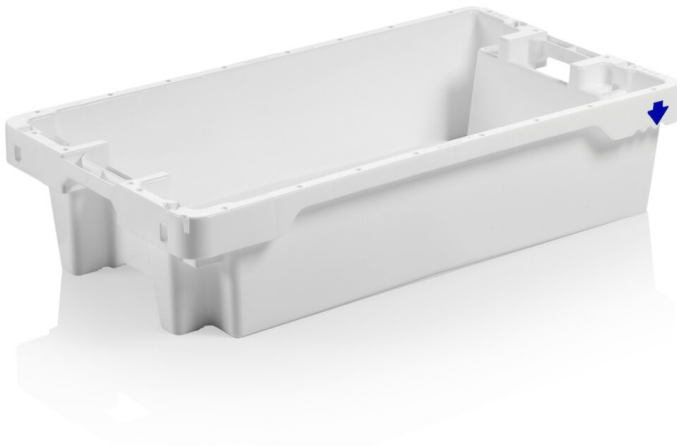






Stack & Nest Box / Fish Box

20 kg / 35 l



Art.-Nr.: 81671010

Technical Data*1			
External Dimensions L x W x H (mm)	800 x 450 x 190	Internal Dimensions L x W x H (mm)	645 x 400 x 180
Weight (kg)	2,6 kg		
Volume (l)	35 l		
Material	PE		
Load capacity (kg)	 Holding Capacity 20kg	 Extra Load 295kg	
Stacking height (mm)	 When nested 55mm	 When stacked 157mm	
Characteristics		Options	
Colour: white Nestable, stackable With base perforation Craemer drainage system For temperatures ranging from -30 °C to +40 °C, briefly up to +90 °C Resistant to most chemicals and cleaning agents Food-safe. HACCP compliant		Without base perforation Transponder (RFID)	
Loading quantities (Pcs / Approximate amount)			
On request			
Labelling			
Customised printing and numbering available on request depending on quantity. Position upon consultation.			



*1 All technical data include characteristic features, which have been tested under specially defined conditions. Varying data may result from different conditions of usage such as loading method, prevailing temperature and length of storage time. All data and specified information are subject to change without notice. Our service team is pleased to be at your disposal to check the special requirements of your individual application.