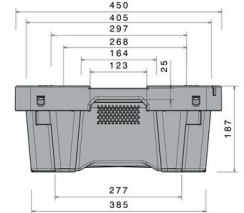
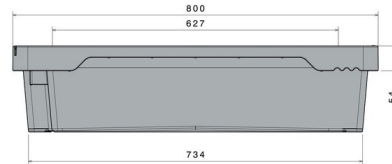


Stack & Nest Box / Fish Box

20 kg / 35 l



Art.-Nr.: 81671010

Technical Data*1			
External Dimensions L x W x H (mm)	800 x 450 x 190	Internal Dimensions L x W x H (mm)	645 x 400 x 180
Weight (kg)	2.6 kg		
Volume (l)	35 l		
Material	PE		
Load capacity (kg)	Holding Capacity 20 kg	Extra Load 295 kg	
Stacking height (mm)	When nested 55 mm	When stacked 157 mm	

Characteristics

- Colour: white
- Nestable, stackable
- With base perforation
- Craemer drainage system
- For temperatures ranging from -30 °C to +40 °C, briefly up to +90 °C
- Resistant to most chemicals and cleaning agents
- Food-safe. HACCP compliant

Options

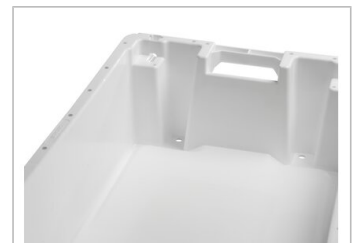
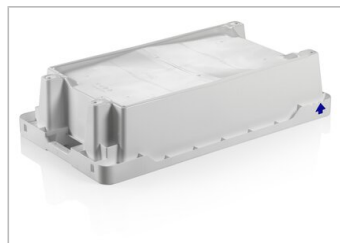
- Without base perforation
- Transponder (RFID)

Loading quantities (Pcs / Approximate amount)

On request

Labelling

Customised printing and numbering available on request depending on quantity. Position upon consultation.



*1 All technical data include characteristic features, which have been tested under specially defined conditions. Varying data may result from different conditions of usage such as loading method, prevailing temperature and length of storage time. All data and specified information are subject to change without notice. Our service team is pleased to be at your disposal to check the special requirements of your individual application.