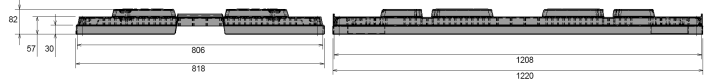


## Pallet lid 1200 x 800 mm



Art.-Nr.: 83292200

### Technical Data\*1

External Dimensions L x W x H (mm)	1220 x 818 x 82
Weight (kg)	5,5 kg
Material*2	PE, ESD
Nesting height	30 mm

### Characteristics

Colour: black  
 Stackable  
 Temperature stability: -30 °C to +40 °C, briefly up to +90 °C  
 ESD lid  
 Surface resistance of  $\geq 1 \times 10^4 \text{ Ohm}$  to  $< 1 \times 10^{11} \text{ Ohm}$

### Options

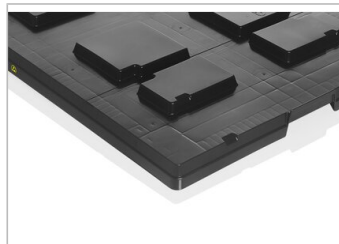
Transponder (RFID)

### Loading quantities (Pcs / Approximate amount)

Guideline: 30 lids per pallet. Exact loading quantities on request.

### Labelling

Hot stamping of letters and logos on request, depending on quantity. Position on long side.



\*1 All technical data include characteristic features, which have been tested under specially defined conditions. Varying data may result from different conditions of usage such as loading method, prevailing temperature and length of storage time. All data and specified information are subject to change without notice. Our service team is pleased to be at your disposal to check the special requirements of your individual application.

\*2 Our service team is pleased to be at your disposal if you require exact information about material compositions.