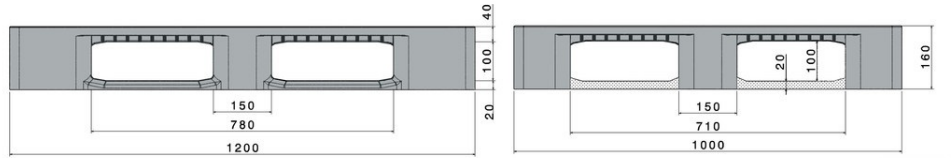
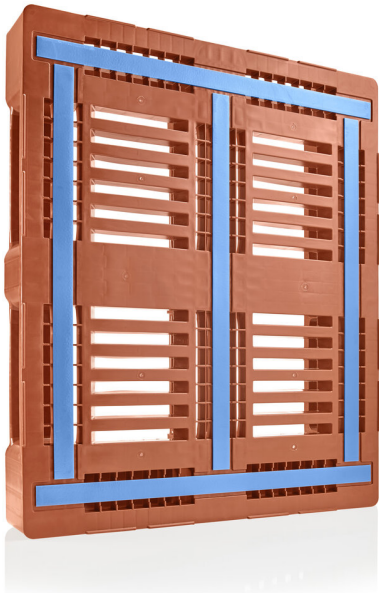


# CR3-5

1200 X 1000 mm



Art.-Nr.: 83330701



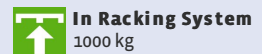
### Technical Data\*\*

Dimensions L x W x H (mm) 1200 x 1000 x 160 mm

Weight (kg) 21,5 kg

Material\*2 PE

Load capacity (kg)\*3



### Characteristics

Colour: red brown / light blue

Runners: 5, unwelded

Rims: 5 mm

Antislip: Palgrip® anti-slip strips on the top deck

Temperature stability: -30 °C to +40 °C, briefly up to +90 °C

### Options

Transponder (RFID)

Reinforcement profiles

Rimoptions

Lid

### Loading quantities (Pcs / Approximate amount)



#### Container

Container 20': **141**  
Container 40': **300**

Container 40' High Cube: **340**  
Conventional trailer 45' high cube container: -



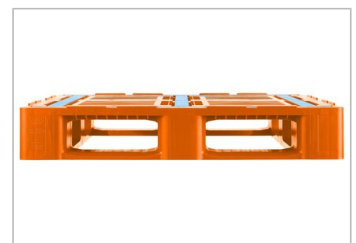
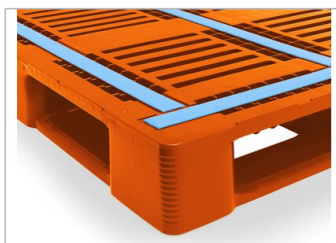
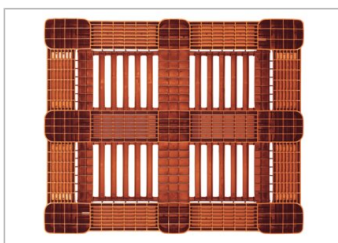
#### Truck

MEGA-Trailer: **468**

Jumbo: **504-540**

### Labelling

Customised printing and numbering available on request depending on quantity. Position upon consultation.



\*1 All technical data include characteristic features, which have been tested under specially defined conditions. Varying data may result from different conditions of usage such as loading method, prevailing temperature and length of storage time. All data and specified information are subject to change without notice. Our service team is pleased to be at your disposal to check the special requirements of your individual application.

\*2 Our service team is pleased to be at your disposal if you require exact information about material compositions.

\*3 **Static load:** resistance to pressure on a flat ground surface and an evenly distributed load at a room temperature of approx. 20 °C.

**Dynamic load:** on a forklift with an evenly distributed load at a room temperature of approx. 20 °C.

**In racking system:** evenly distributed load (sacks) along the longitudinal sides. Resting on two supports for over 100 h at a room temperature of approx. 20 °C.