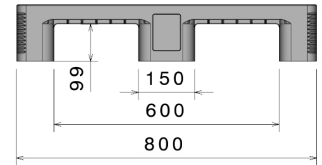
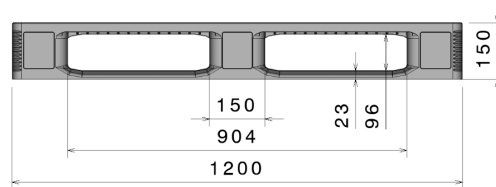
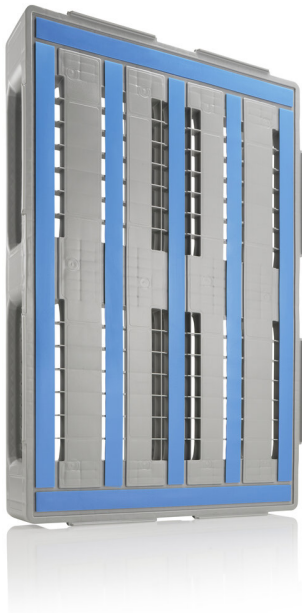


EURO L1®


1200 x 800 mm



Art.-Nr.: 83241851



Technical data

Dimensions L x W x H (mm)	1200 x 800 x 150		
Weight (kg)	20.0 kg		
Material*2	PE		
Load capacity (kg)	 Static 7500 kg	 Dynamic 1250 kg	 In Racking System 1250 kg

Characteristics

Colour: light grey / light blue
 Runners: 3, welded
 Reinforcement profiles: 5
 Rims: 7 mm
 Antislip: yes, antislip strips
 Temperature stability: -30 °C to +40 °C, briefly up to +90 °C

Options

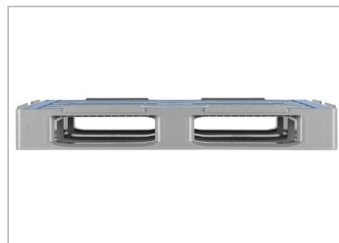
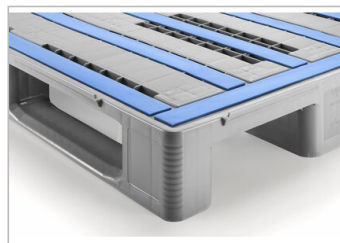
Rimoptions
 Transponder (RFID)
 Palgrip® anti-slip runners

Loading quantities (Pcs / Approximate amount)

 Container	Container 20': 215 Container 40': 440	Container 40' High Cube: 465 Conventional trailer 45' high cube container: 528
 Truck	MEGA-Trailer: 646	Jumbo: 722

Labelling

Customised printing and numbering available on request depending on quantity. Position upon consultation.



*1 All technical data include characteristic features, which have been tested under specially defined conditions. Varying data may result from different conditions of usage such as loading method, prevailing temperature and length of storage time. All data and specified information are subject to change without notice. Our service team is pleased to be at your disposal to check the special requirements of your individual application.

*2 Our service team is pleased to be at your disposal if you require exact information about material compositions.

*3 **Static load:** resistance to pressure on a flat ground surface and an evenly distributed load at a room temperature of approx. 20 °C.
Dynamic load: on a forklift with an evenly distributed load at a room temperature of approx. 20 °C.
In racking system: evenly distributed load (sacks) along the longitudinal sides. Resting on two supports for over 100 h at a room temperature of approx. 20 °C.