

Don't let your pallets be the weak link of your automated operations



Quality-tested by Virginia Tech



CR4-5
completed
outstanding
500
cycles

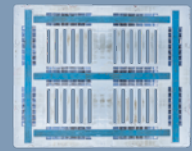
CR4-5, American Standard 48" x 40"

Purpose of the Test	Evaluation of the durability of the Craemer CR4-5 Plastic Pallet design using Virginia Tech's FasTrack simulation.
Test Program	Virginia Tech's FasTrack solution of the grocery supply chain.
Test Period	February 3, 2022 – June 14, 2022
Test performed by	The Center for Packaging and Unit Load Design Virginia Polytechnic Institute & State University 1650 Research Center Dr. Blacksburg, Virginia 24061
Test Report-No.	2022-0005

Test summary:

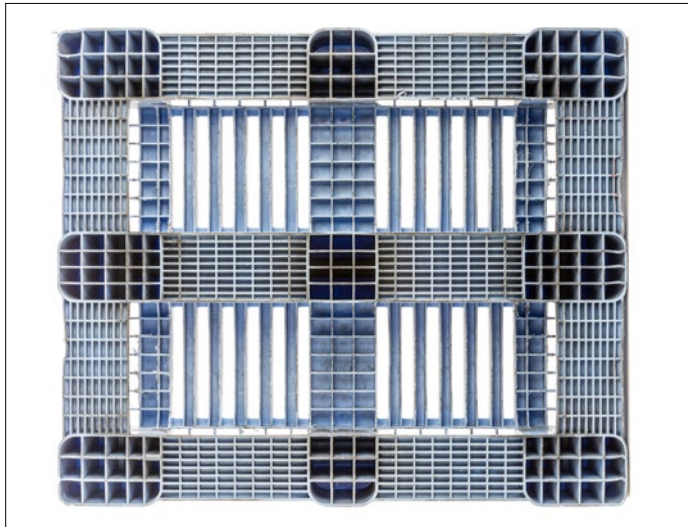
Pallet Design	Number of Replicates	Number of FasTrack Cycles	Main Mode of Failure
Pallet Replicates	10	500	No failures were observed

All evaluated pallets **successfully survived 500 FasTrack cycles** without experiencing any structural damage.



FasTrack handling modes

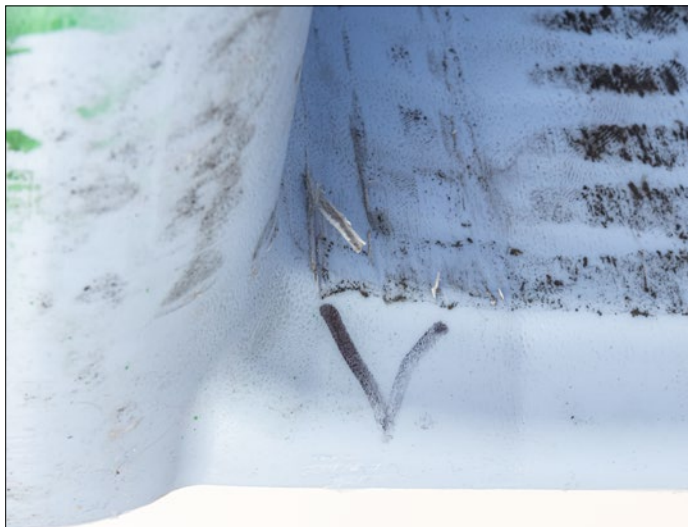
- **Empty pallet storage area:** Empty pallets are stacked and stored in this area.
- **Staging area:** Used for sluing and turning pallets so that the forklift can enter the pallet ends and sides to transfer the pallet via pallet jack. The pallet is staged before and after entering the trailer. This simulates shipping and receiving docks.
- **Trailer:** A simulated 102-in trailer opening with plywood sides. Pallets are moved in and out of one side of the opening (using the pallet sides and ends) to resemble a confined space.
- **Static rack storage:** Simulates warehouse rack storage. The standard free span is 44-in.
- **Stack storage:** Simulates warehouse block stack storage of loaded pallets. The loaded pallet is placed on an irregular surface of corrugated boxes of different height.



No deformations on runners or the pallet body.
Pallet remains fully functional.



The pallet feet are free from cracks, hairline cracks or other damages.



Fully intact runner connection for safe handling processes even after many cycles.



Welded Palgrip® anti-slip strips remain firmly on the pallet deck compared to glued competitor products.