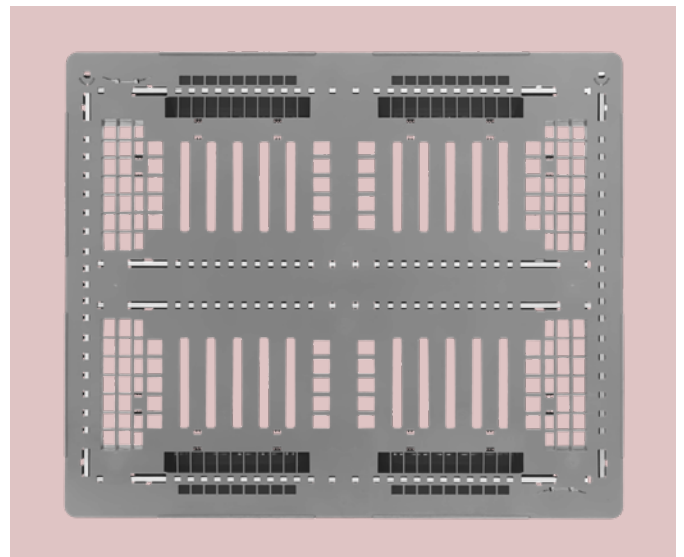
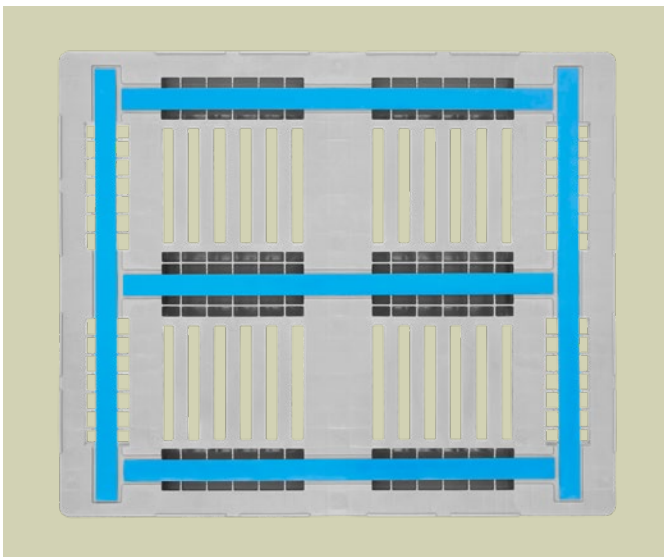
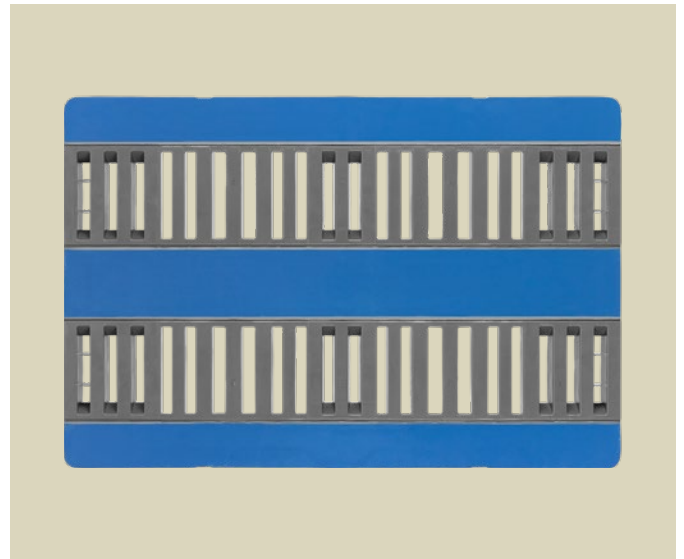
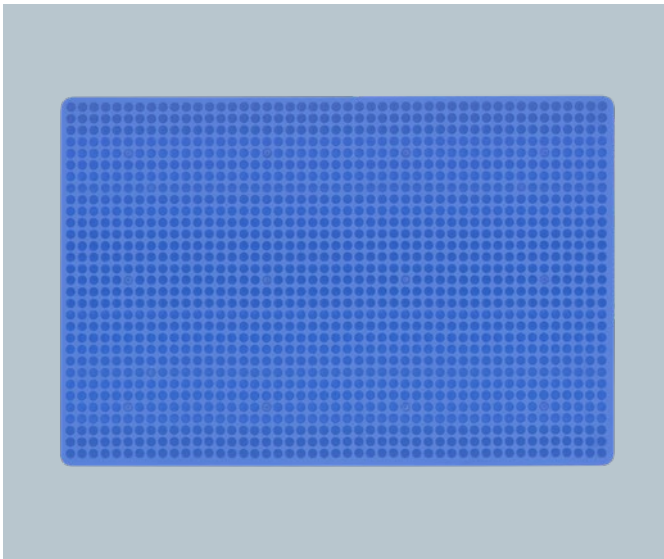
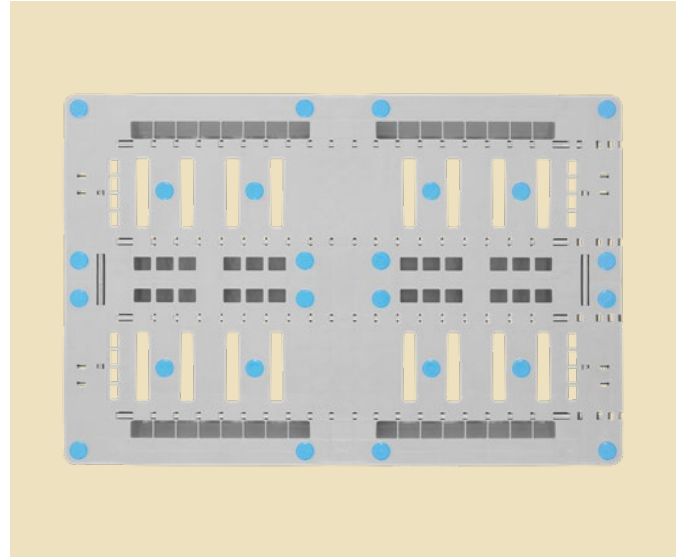
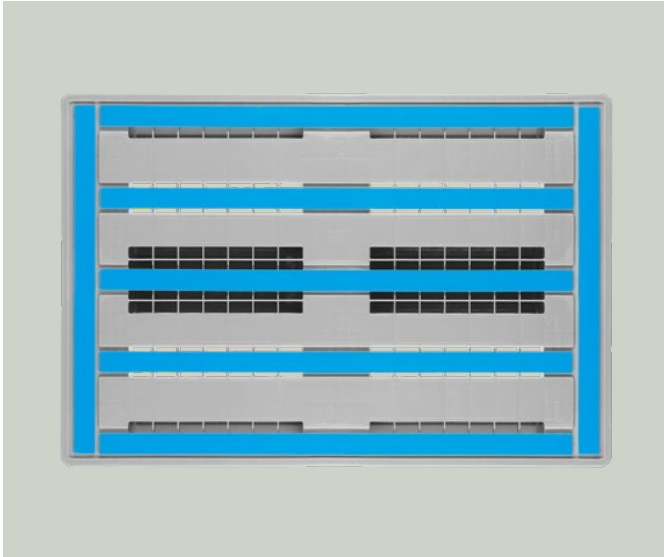
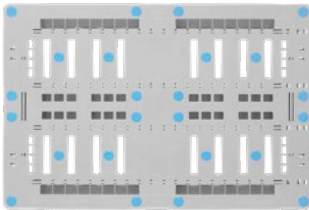


# Plastic Pallets





EURO L1® & L3® – Page 4



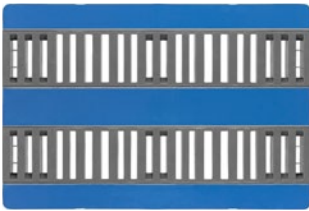
A1 – Page 6



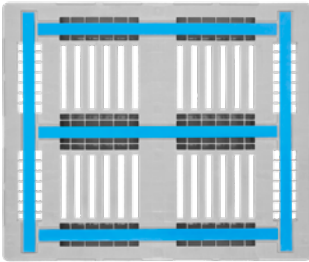
TC1 & TC3/TC3-5 Palgrip® – Page 8



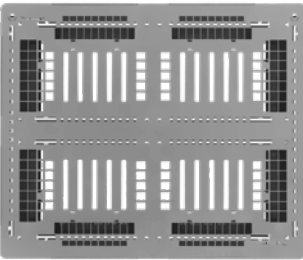
TC1 & TC3/TC3-5 – Page 10



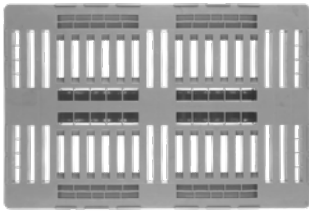
CR1 & CR3/CR3-5 – Page 12



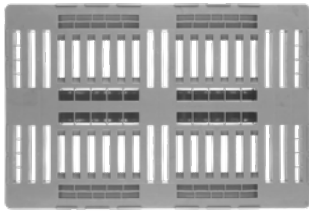
CR4/CR4-5 – Page 14



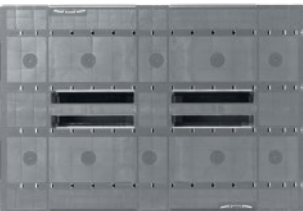
E3/E3-5 – Page 16



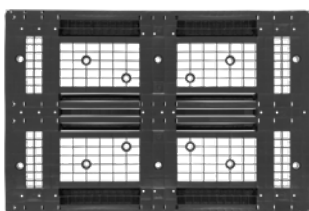
EURO H1 – Page 18



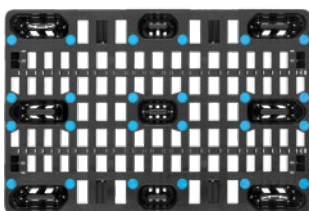
H1 & H3 – Page 20



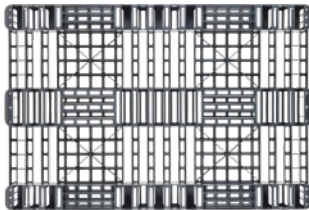
CS1 & CS3 – Page 22



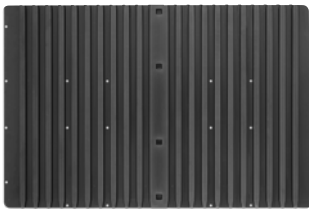
D1 & D3/D3-5 – Page 24



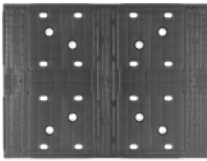
NP1 – Page 26



SL1 – Page 28



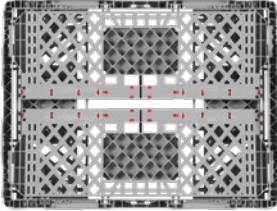
Non-Stop – Page 30



Half Pallets – Page 32



Pallet Lids – Page 35



Pallet Collars – Page 38

The right plastic pallet for every application ..... Page 40

Advantages with Craemer plastic pallets ..... Page 41

Palgrip® ..... Page 42

RFID ..... Page 44

Durable plastic products ..... Page 45

Individualisation ..... Page 46

Explanations ..... Page 47

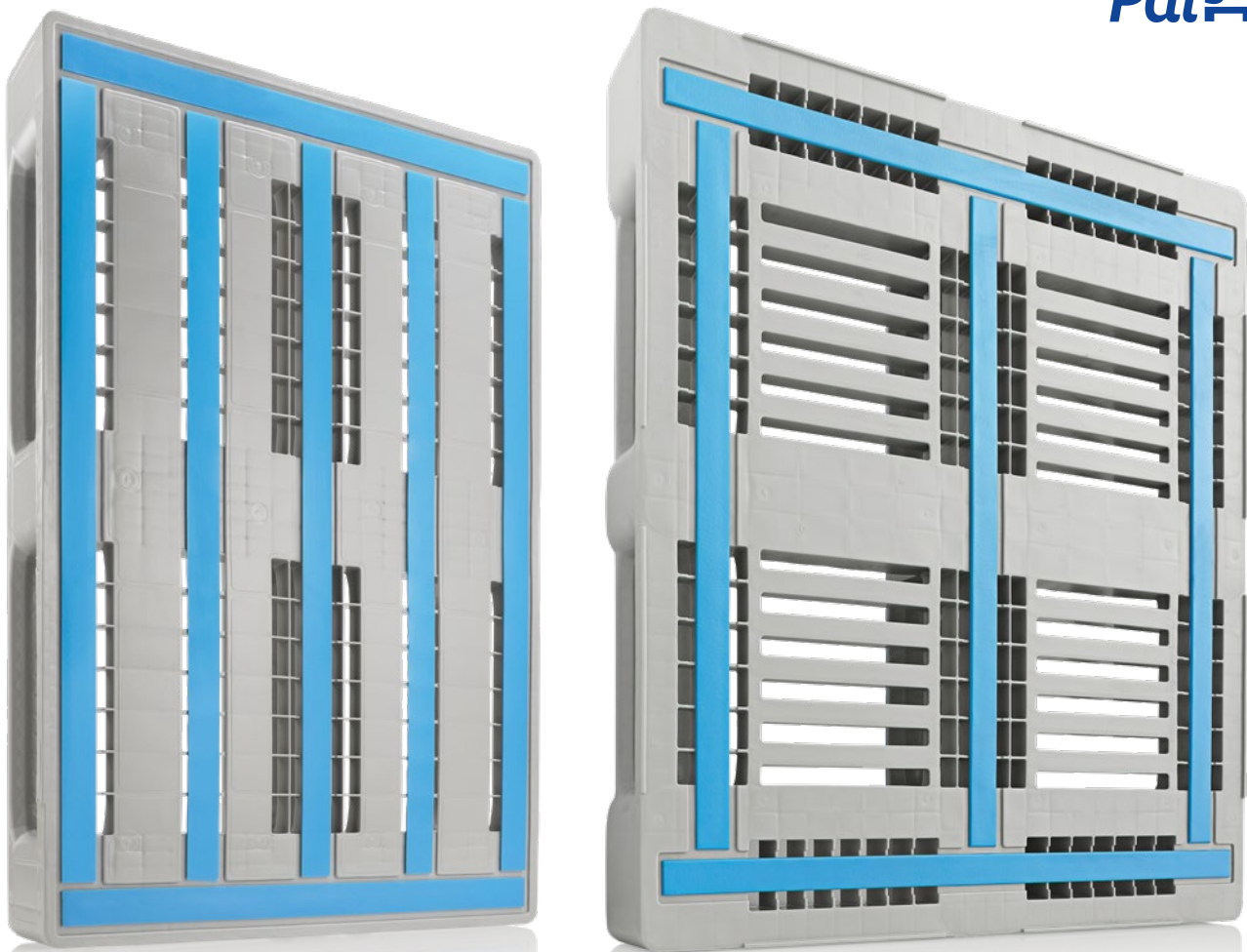
**Germany (Headquarters Export Department)**  
**Craemer GmbH**  
Brocker Straße 1  
33442 Herzebrock-Clarholz | Germany  
Tel.: +49 5245 43-0  
E-Mail: [info@craemer.com](mailto:info@craemer.com)  
[www.craemer.com/en](http://www.craemer.com/en)

**United Kingdom**  
**Craemer UK Ltd**  
Craemer House  
Hortonwood 1  
Telford, Shropshire TF1 7GN | United Kingdom  
Tel: +44 1952 6078-00 | Fax: +44 1952 6078-01  
E-mail: [sales.uk@craemer.com](mailto:sales.uk@craemer.com)  
[www.craemer.co.uk](http://www.craemer.co.uk)

# L – The Game Changer



Palgrip



## Euro L1® – Euro Format

Technical data *1				Load capacity *3	
Name	Euro L1®	Material *2	PE	Load capacity	7500 kg
Dimensions LxWxH	1200 x 800 x 150 mm	Weight *3	20 kg	Dynamic load	1250 kg
				High-rack	1250 kg

## L3® – Industrial Format

Technical data *1				Load capacity *3	
Name	L3®	Material *2	PE	Load capacity	7500 kg
Dimensions LxWxH	1200 x 1000 x 160 mm	Weight *3	26 kg	Dynamic load	2000 kg
				High-rack	2000 kg

### Characteristics:

- Optimised for automated processes in intralogistics
- Designed for food applications
- Reliable use even with high trip rates
- Ideal load safety thanks to Palgrip®-antislip strips on the top deck
- Welded runners for smooth running on all standard conveyor technology systems
- High load capacity due to corrosion-protected reinforcement profiles (not visible)
- One-piece injection-moulded with 3 runners
- Ideal handling with forklift trucks thanks to chamfered edges on both sides of all runners

- Standard colours: 

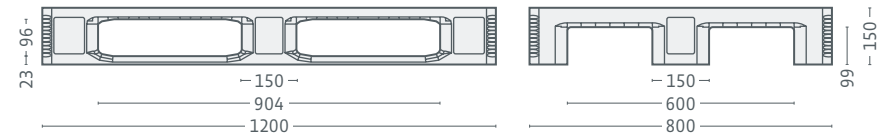
### Special features Euro L1®:

- Compatible with automated old and new systems to ensure smooth integration into existing processes
- Identical in construction to wooden Euro pallet, perfect for exclusive or parallel use in automated intralogistics

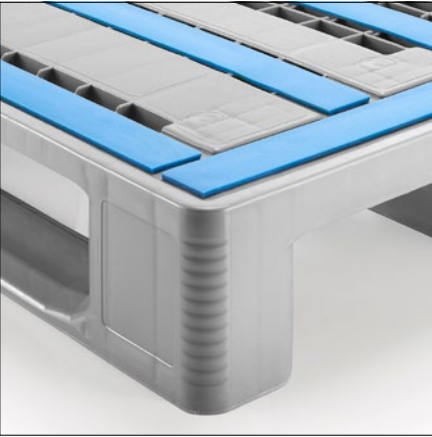
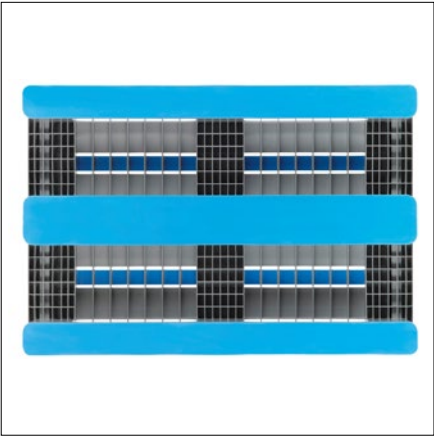
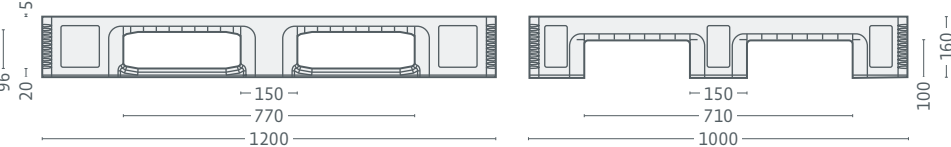
### Options:

- Rim options: without, 7 mm (only Euro L1®) / without, 5 mm (only L3®)
- RFID transponder
- Printing options (individual logos, lettering or numbering)

Euro L1® – Euro Format

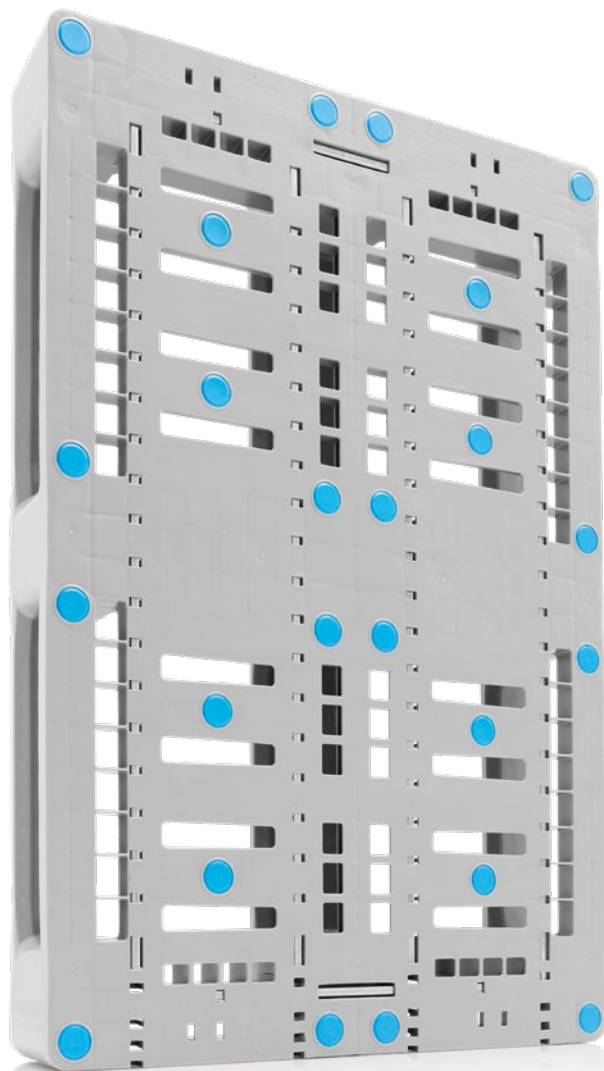
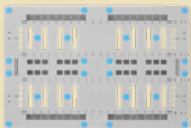


L3® – Industrial Format





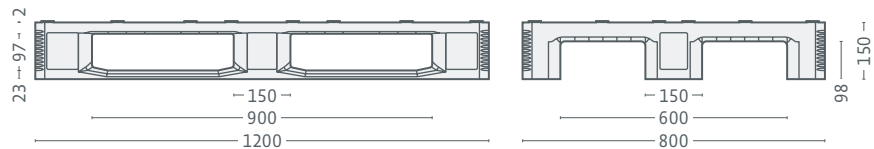
A – The Game Changer



- Characteristics:
- **Identical in construction to wooden Euro pallet**, for exclusive or parallel use
  - **Optimised for automated processes** in intralogistics
  - **Compatible with old and new systems** to ensure smooth integration into existing processes
  - **Perfect for Non-Food/industrial applications**
  - **Reliable use** even with high trip rates
  - **High load safety** thanks to 24 abrasion-resistant Palgrip® anti-slip pads on the top deck
  - **Welded runners for running smoothness** on all standard conveyor technology systems
  - **High load capacity** due to corrosion-protected reinforcement profiles (visible)
  - **One-piece injection-moulded** with 3 runners
  - **Ideal handling with forklift trucks** thanks to chamfered edges on both sides of all runners
- Standard colours: 

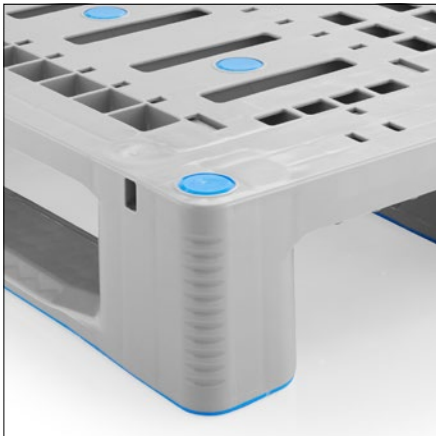
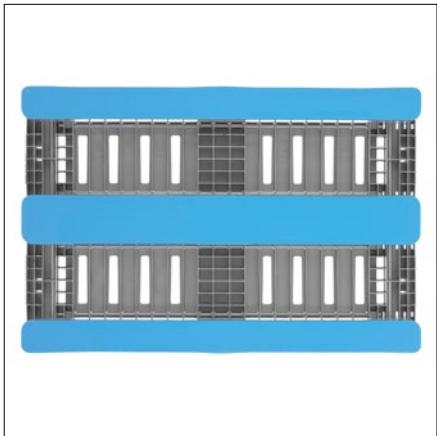
- Options:
- Rim options: without, 7 mm outside, 22 mm outside
  - RFID transponder
  - Retrofittable Palgrip® anti-slip clips for the underside of the deck
  - Printing options (individual logos, lettering or numbering)

A1 – Euro Format



A1 – Euro Format

Technical data *1				Load capacity *3	
Name	A1	Material *2	PE	Load capacity	7500 kg
Dimensions LxWxH	1200 x 800 x 150 mm	Weight *3	18,5 kg	Dynamic load	1250 kg
				High-rack	1250 kg

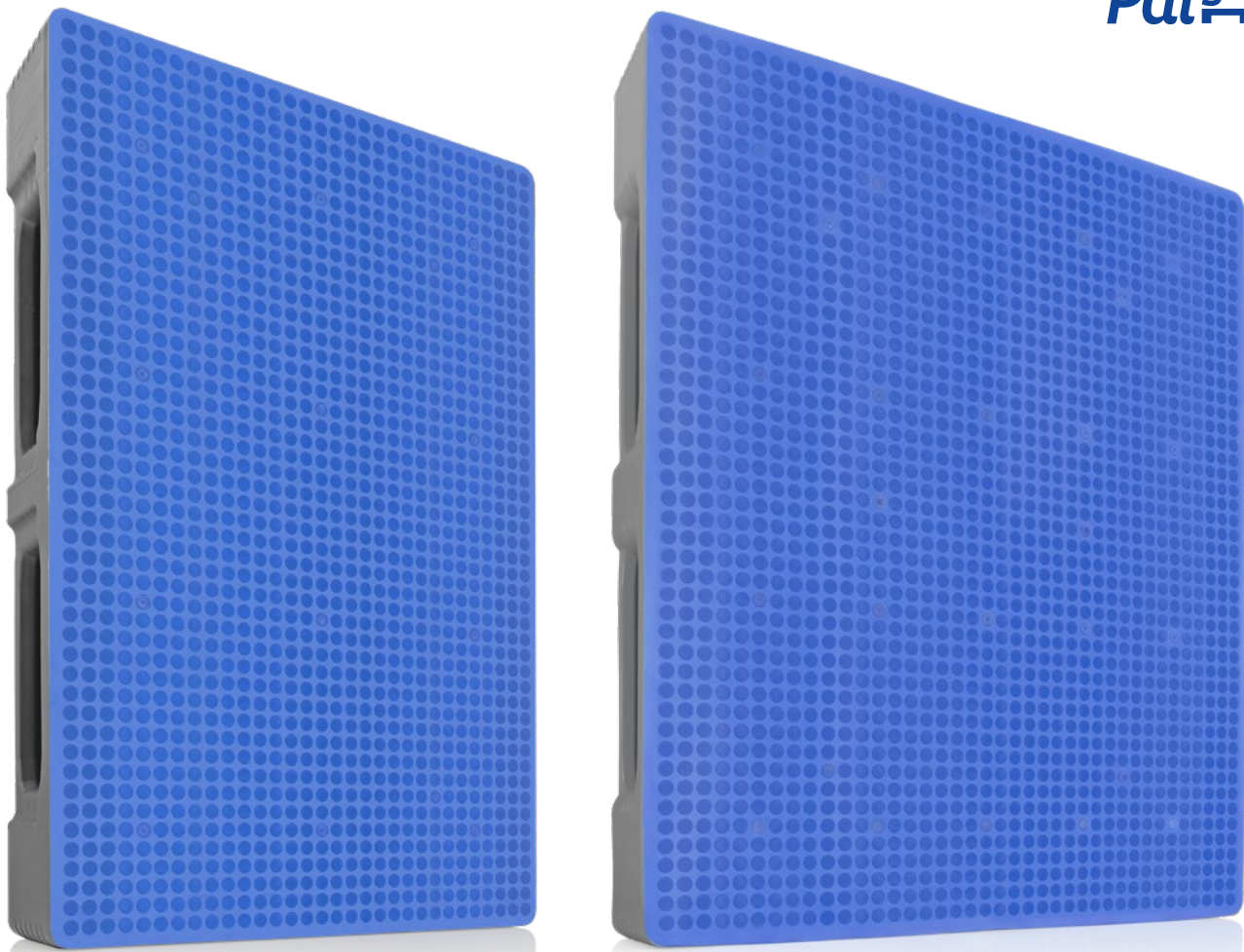




TC Palgrip® – Doesn't slip



Palgrip



TC1 Palgrip® – Euro Format

Technical data *1				Load capacity *3	
Name	TC1 Palgrip®	Material *2	PE	Load capacity	7500 kg
Dimensions LxWxH	1200 x 800 x 160 mm	Weight *3	19 - 21,5 kg	Dynamic load	1250 - 1750 kg
				High-rack	1000 - 1750 kg

TC3/TC3-5 Palgrip® – Industrial Format

Technical data *1				Load capacity *3	
Name	TC3/TC3-5 Palgrip®	Material *2	PE	Load capacity	7500 kg
Dimensions LxWxH	1200 x 1000 x 160 mm	Weight *3	23 - 26,5 kg	Dynamic load	1500 - 2000 kg
				High-rack	1250 - 2000 kg

Characteristics:

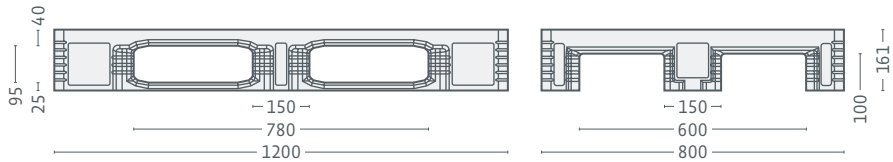
- **Unparalleled load safety** thanks to full-surface Palgrip® anti-slip deck
- **Ultimate heavy-duty pallet** with high load capacity, ideal for a variety of applications
- **Highest impact and breakage resistance** thanks to solid wall thickness and patented welding seam geometry of top and bottom deck
- **Dimensionally stable with first-class bending parameters** for rack applications
- **Excellent cleaning properties** without residual moisture after drying process
- **Completely closed**, available as 3-runner TC1 Palgrip® or TC3 Palgrip® as well as 5-runner TC3-5 Palgrip®
- **Ideal handling with forklift trucks** thanks to chamfered edges on both sides of all runners

• Standard colours:

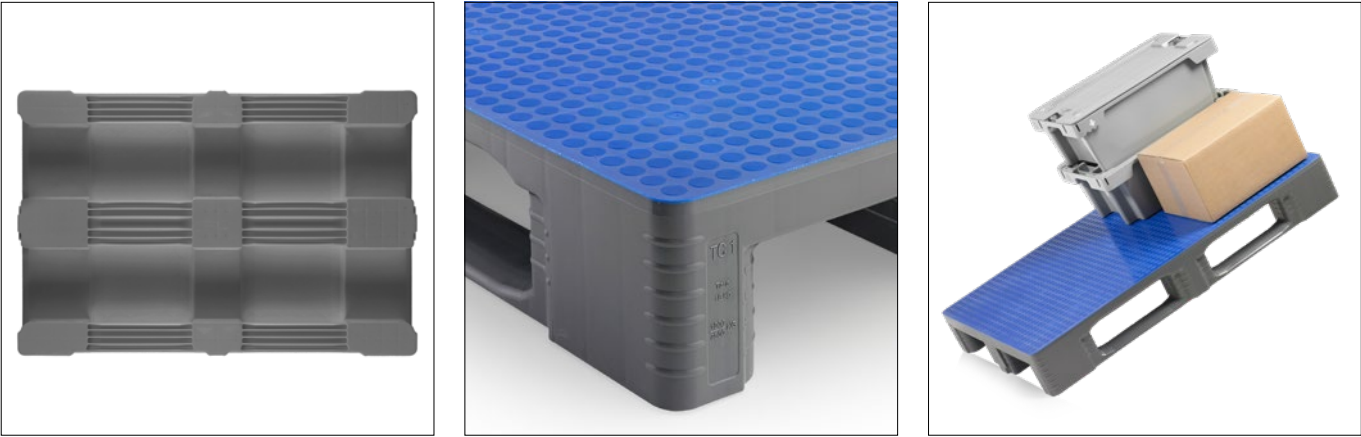
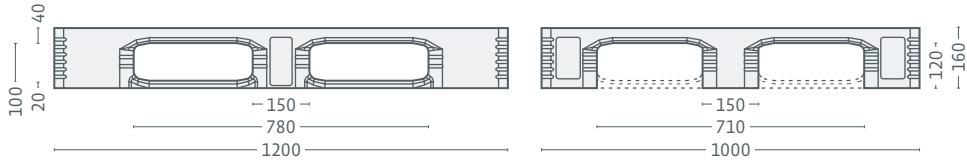
Options:

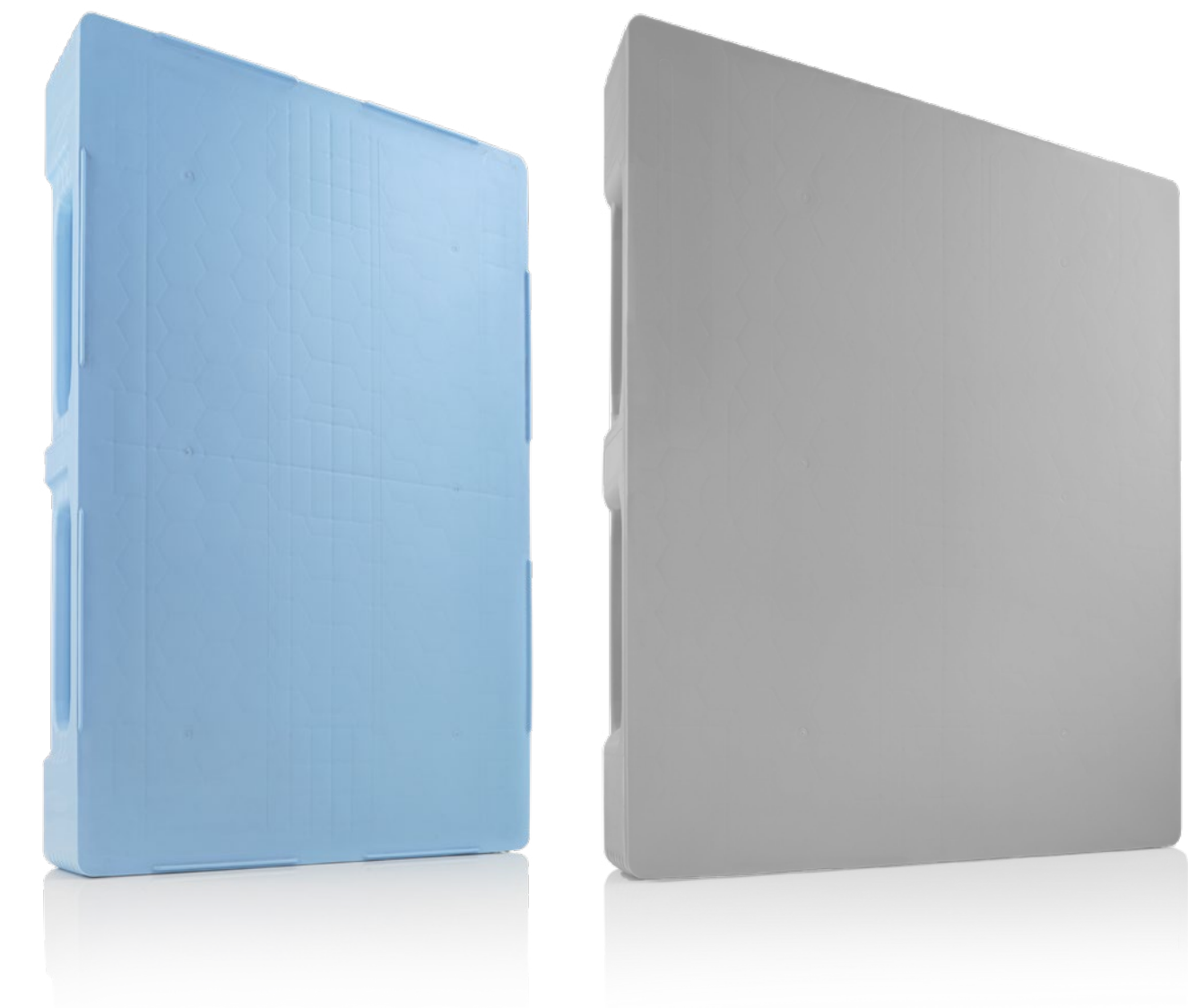
- Corrosion-protected reinforcement profiles (not visible)
- RFID transponder
- Printing options (individual logos, lettering or numbering)

TC1 – Euro Format



TC3/TC3-5 – Industrial Format





TC1 – Euro Format

Technical data *1				Load capacity *3	
Name	TC1	Material *2	PE	Load capacity	7500 kg
Dimensions LxWxH	1200 x 800 x 160 mm	Weight *3	18 - 20,5 kg	Dynamic load	1250 - 1750 kg
				High-rack	1000 - 1750 kg

TC3/TC3-5 – Industrial Format

Technical data *1				Load capacity *3	
Name	TC3/TC3-5	Material *2	PE	Load capacity	7500 kg
Dimensions LxWxH	1200 x 1000 x 160 mm	Weight *3	21,5 - 25 kg	Dynamic load	1500 - 2000 kg
				High-rack	1250 - 2000 kg

Characteristics:

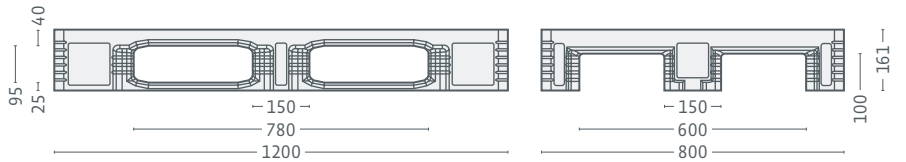
- **Compatible with all other closed pallets in the market**
- **Ultimate heavy-duty pallet** with high load capacity, ideal for a variety of applications
- **Unbeatable cleanliness and hygiene** with outstanding cleaning properties
- **Perfect for transportation and storage of bagged goods**
- **Highest breakage resistance** thanks to solid wall thickness and patented welding seam geometry of top and bottom deck
- **Dimensionally stable with first-class bending parameters** for rack applications
- **Completely closed**, available as 3-runner TC1 or TC3 or 5-runner TC3-5
- **Ideal handling with forklift trucks** thanks to chamfered edges on both sides of all runners

- Standard colours:

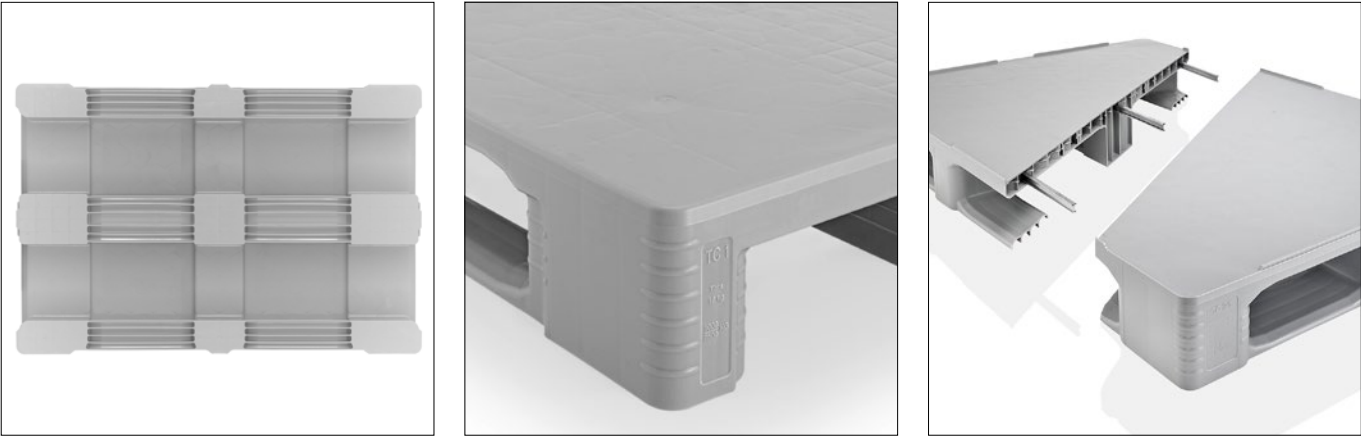
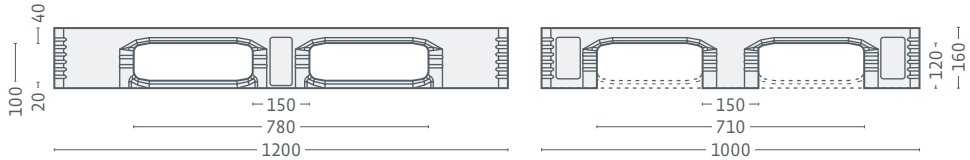
Options:

- Corrosion-protected reinforcement profiles (not visible)
- Rim options: without, 7 mm, 22 mm, 22 mm outside (only TC1) / without, 7 mm, 22 mm (only TC3/TC3-5)
- RFID transponder
- Printing options (individual logos, lettering or numbering)

TC1 – Euro Format

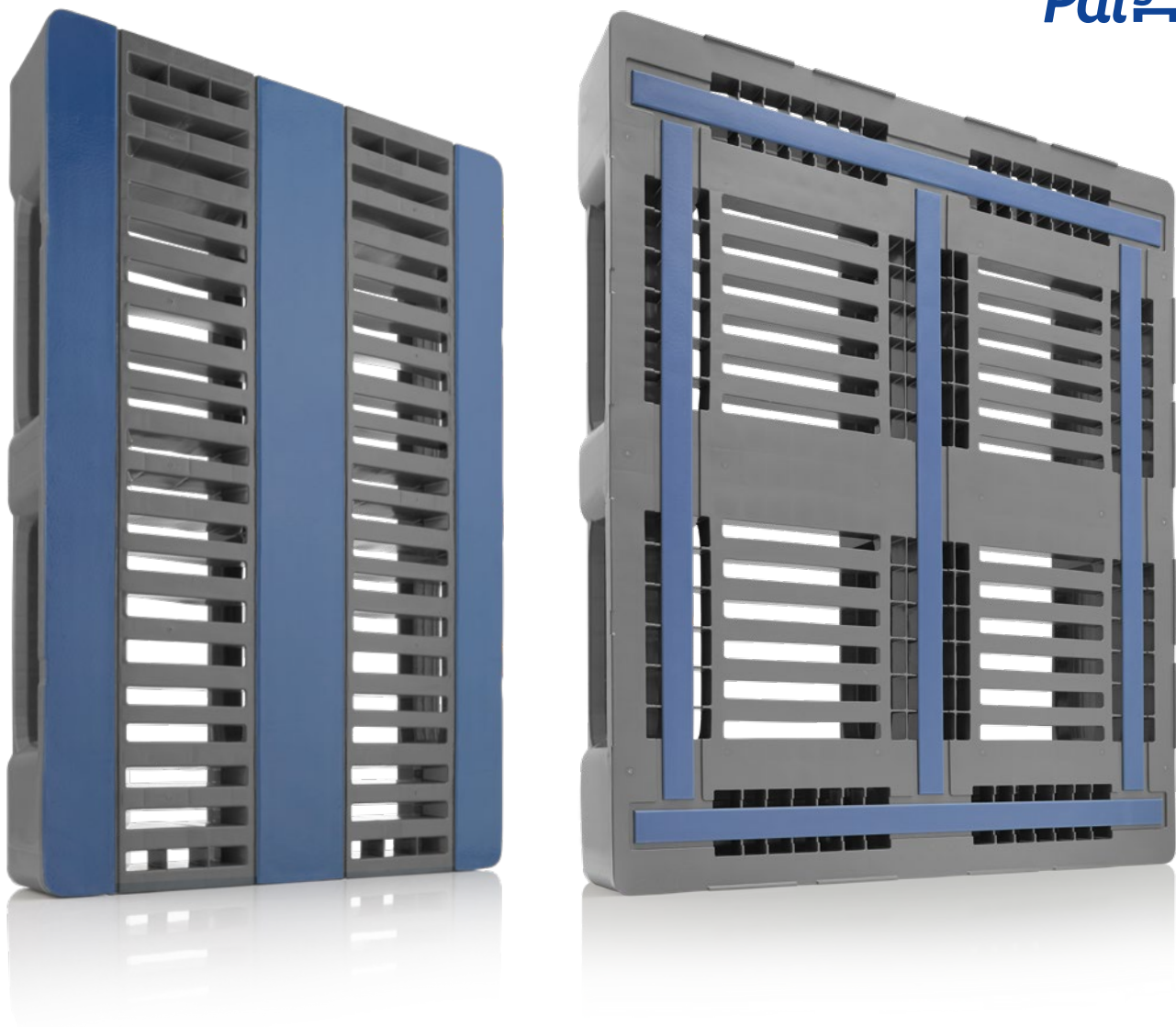
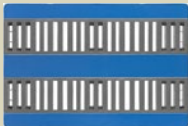


TC3/TC3-5 – Industrial Format





# CR – The ultimate performer



## CR1 – Euro Format

Technical data *1				Load capacity *3	
Name	CR1	Material *2	PE	Load capacity	5000 - 7500 kg
Dimensions LxWxH	1200 x 800 x 160 mm	Weight *3	16 - 19 kg	Dynamic load	1250 - 1750 kg
				High-rack	1000 - 1750 kg

## CR3/CR3-5 – Industrial Format

Technical data *1				Load capacity *3	
Name	CR3/CR3-5	Material *2	PE	Load capacity	5000 - 7500 kg
Dimensions LxWxH	1200 x 1000 x 160 mm	Weight *3	20 - 25 kg	Dynamic load	1250 - 1500 kg
				High-rack	1000 - 1400 kg

### Characteristics:

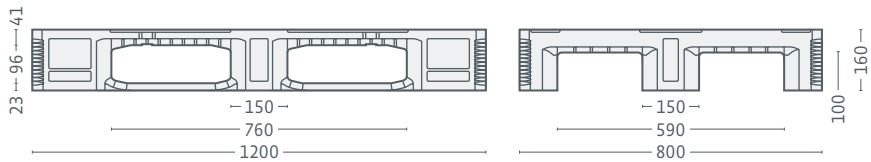
- **All-rounder in the heavy-duty category**, universally usable
- **Designed for permanently high loads** and demanding handling
- **Dimensionally stable with first-class bending parameters**, ideal for a variety of applications
- **High load safety** thanks to Palgrip® anti-slip strips on the top deck
- **One-piece injection-moulded**, available as 3-runner CR1 or CR3 as well as 5-runner CR3-5
- **Ideal handling with forklift trucks** thanks to chamfered edges on both sides of all runners

- Standard colours:

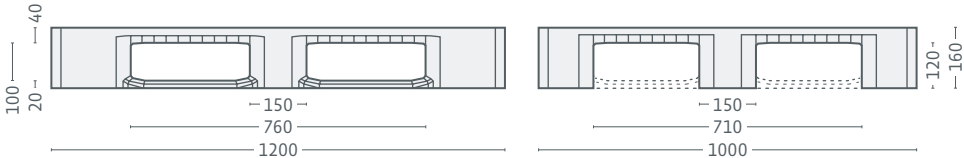
### Options:

- Corrosion-protected reinforcement profiles (not visible)
- Rim options: without, 5 mm (only CR1) / without, 5 mm, 7 mm (only CR3/CR3-5)
- RFID transponder
- Printing options (individual logos, lettering or numbering)

CR1 – Euro Format

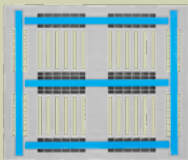


CR3/CR3-5 – Industrial Format








# CR4/CR4-5 – The American Standard



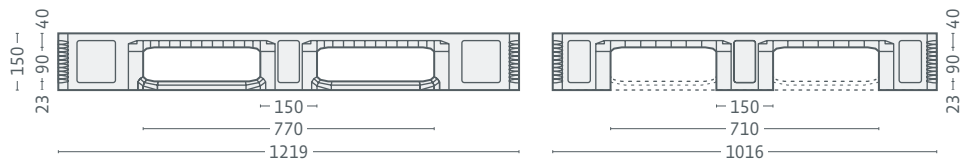
Palgrip



- Characteristics:
- Perfect for handling heavy loads
  - Specially designed for the US market in inch dimensions
  - Dimensionally stable with first-class bending parameters, ideal for a variety of applications
  - High load safety thanks to Palgrip® anti-slip strips on the top deck
  - One-piece injection-moulded, available as 3-runner CR4 or 5-runner CR4-5
  - Ideal handling with forklift trucks thanks to chamfered edges on both sides of all runners
- Standard colours:   

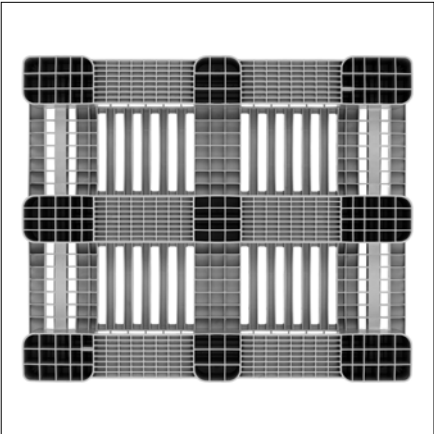
- Options:
- Corrosion-protected reinforcement profiles (not visible)
  - Rim options: without, 5 mm
  - RFID transponder
  - Printing options (individual logos, lettering or numbering)

CR4/CR4-5

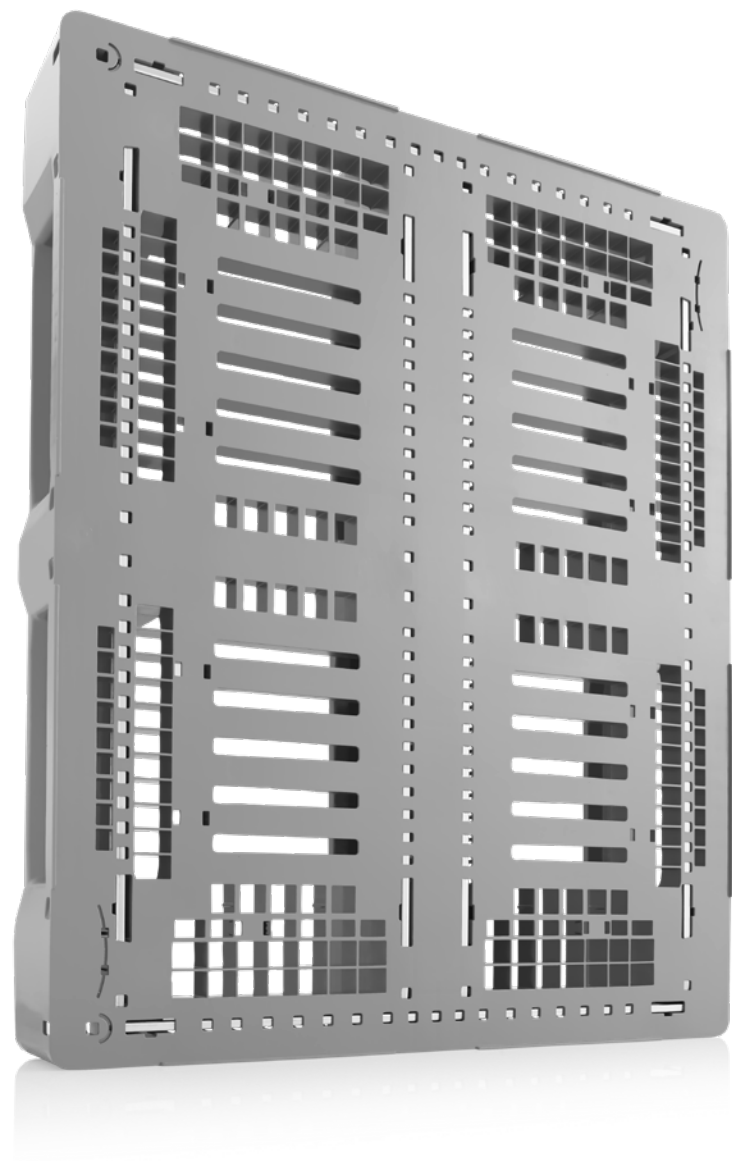
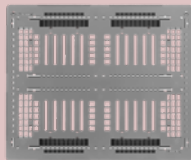


## CR4/CR4-5 – Inch-size

Technical data *1				Load capacity *3	
Name	CR4/CR4-5	Material *2	PE	Load capacity	5000 - 7500 kg
Dimensions LxWxH	48 x 40 x 5.9 "	Weight *3	21,5 - 27,5 kg	Dynamic load	1250 - 1500 kg
	1219 x 1016 x 150 mm			High-rack	1000 - 1400 kg



E – Robust all-rounder



E3/E3-5 – Industrial Format

Technical data <sup>*1</sup>				Load capacity <sup>*3</sup>	
Name	E3/E3-5	Material <sup>*2</sup>	PE	Load capacity	7500 kg
Dimensions LxWxH	1200 x 1000 x 160 mm	Weight <sup>*3</sup>	23,5 - 24,5 kg	Dynamic load	1500 kg
				High-rack	1400 kg

Characteristics:

- **Exceptionally stable and shock resistant** thanks to high wall thickness and robust construction
- **Suitable for use across all industries** in a variety of applications
- **High load capacity** due to corrosion-protected reinforcement profiles
- **No stress fractures or cracks** thanks to strong connection to the pallet body
- **Straight centre runner** without recesses or notches
- **Dimensionally stable with first-class bending parameters** for rack applications
- **One-piece injection-moulded**, available as 3-runner E3 or 5-runner E3-5
- **Ideal handling with forklift trucks** thanks to chamfered edges on both sides of all runners

- Standard colours:

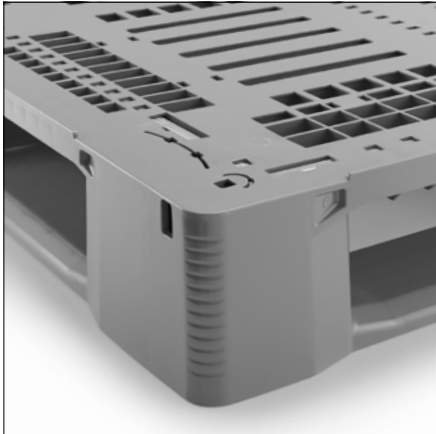
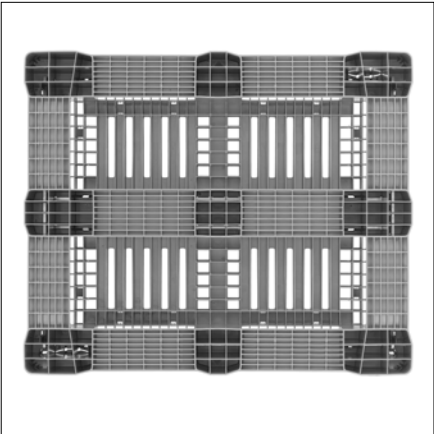
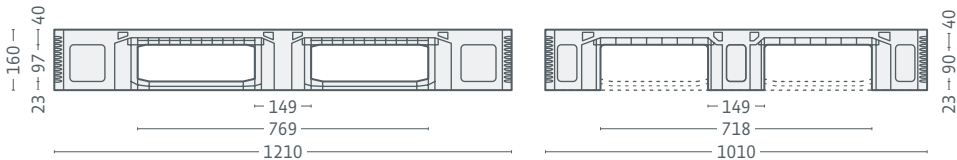
E Pallet as Zero Virgin

The Zero Virgin pallet version is made from 100% recycled plastic. Its material is reclaimed from discarded plastic products in the company’s own extruder machinery and refined. As a result, the recycled material remains extremely high-quality and, like the recyclable E3-5 Zero Virgin, is an integral part of the production cycle.

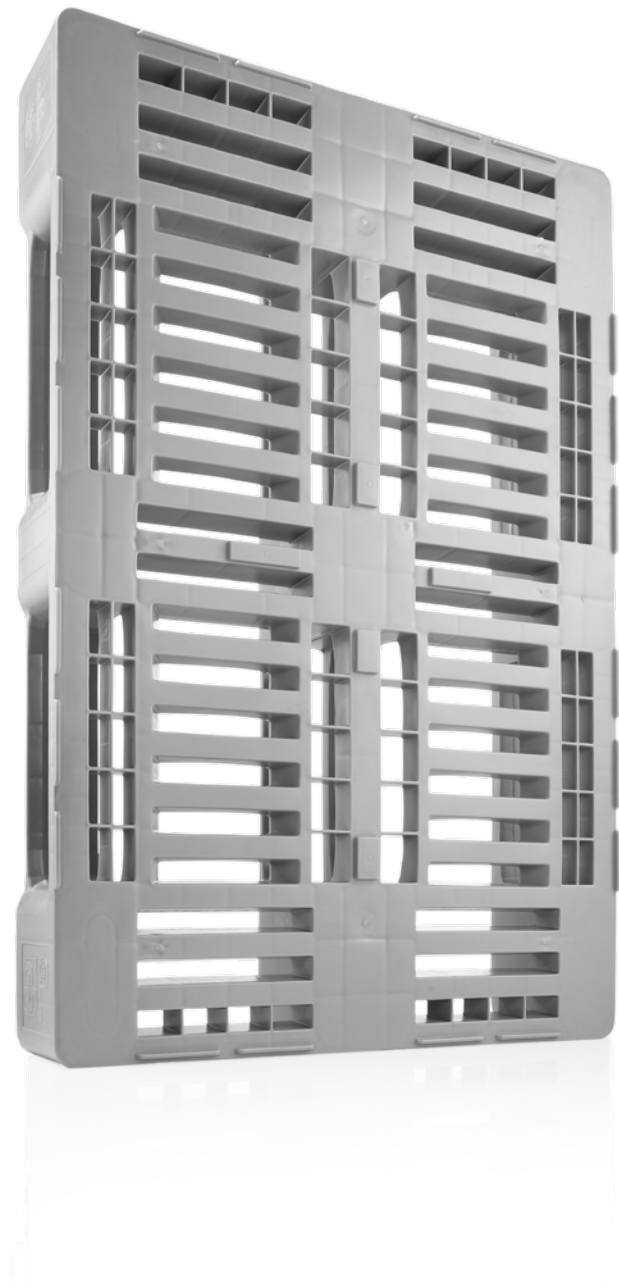
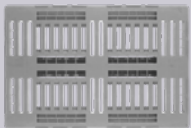
Options:

- Rim options: without, 5 mm, 7 mm, 22 mm
- RFID transponder
- Retrofittable Palgrip® anti-slip clips for the underside of the deck
- Printing options (individual logos, lettering or numbering)

E3/E3-5 – Industrial Format



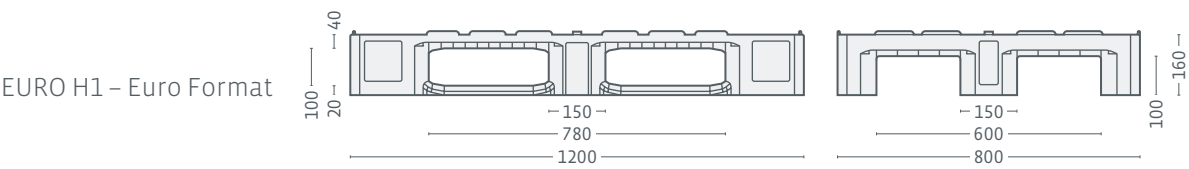
# EURO H1 – The certified one



- Characteristics:**
- **Certified with the GS1 seal since 1993 with universally accepted interchangeability** in the open Euro pallet pool
  - **Accepted standard in the meat industry** and No. 1 hygiene pallet for the food industry
  - **Extremely durable with a service life of over 12 years**, confirmed by the Fraunhofer Institute in Dortmund
  - **Basis for standardised box systems**, compatible with H2 half pallet and E-boxes (E1-E3)
  - **Standard-equipped with welded runners** for smooth running on conveyors and guaranteed high standard of hygiene
  - **Excellent cleaning properties**
  - **One-piece injection-moulded** with 3 runners
  - **Ideal handling with forklift trucks** thanks to chamfered edges on both sides of all runners

• Standard colours: 

- Options:**
- Printing options (individual logos, lettering or numbering)



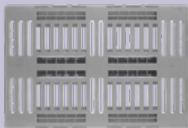
## EURO H1 – Euro Format

Technical data <sup>*1</sup>				Load capacity <sup>*3</sup>	
Name	EURO H1	Material <sup>*2</sup>	PE	Load capacity	5000 kg
Dimensions LxWxH	1200 x 800 x 160 mm	Weight <sup>*3</sup>	18 kg	Dynamic load	1250 kg
				High-rack	1000 kg





# H – An established classic



H1 – Euro Format

Technical data *1				Load capacity *3	
Name	H1	Material *2	PE	Load capacity	5000 kg
Dimensions LxWxH	1200 x 800 x 160 mm	Weight *3	18 kg	Dynamic load	1250 kg
				High-rack	1000 kg

H3 – Industrial Format

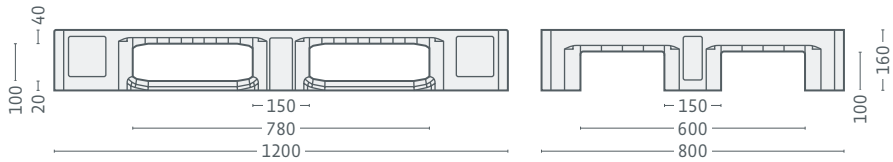
Technical data *1				Load capacity *3	
Name	H3	Material *2	PE	Load capacity	5000 kg
Dimensions LxWxH	1200 x 1000 x 160 mm	Weight *3	22 kg	Dynamic load	1250 kg
				High-rack	850 kg

- Characteristics:**
- **Established plastic pallet** in the food industry and in non-food applications
  - **Particularly robust** with high bending stiffness
  - **Ideal for medium-heavy loads** in a variety of application areas
  - **Excellent cleaning properties**
  - **GS label for tested safety (only H1)**
  - **One-piece injection-moulded** with 3 runners
  - **Ideal handling with forklift trucks** thanks to chamfered edges on both sides of all runners

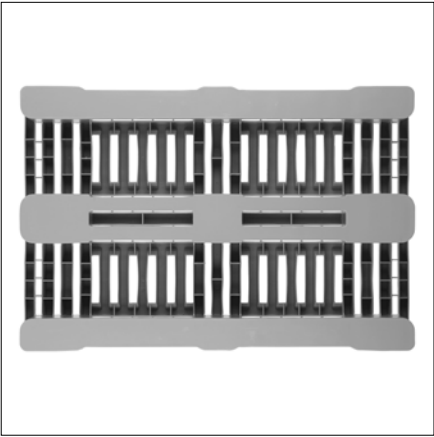
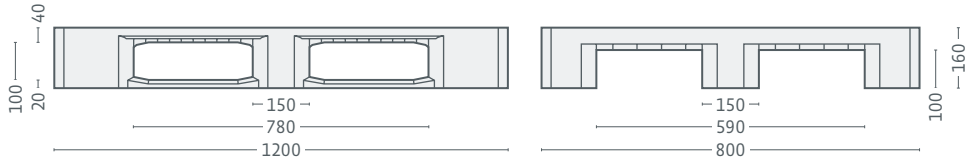
• Standard colours:  

- Options:**
- Welded runners for smooth running on conveyors and high standard of hygiene
  - Reinforced runner plates
  - Palgrip® anti-slip runners
  - Rim options: without, 7 mm
  - RFID transponder
  - ESD version: Reliably protects components and materials from electrostatic discharge
  - Printing options (individual logos, lettering or numbering)

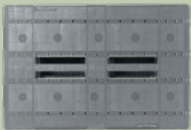
H1 – Euro Format



H1 – Industrial Format



CS – The multi-talent



CS1 – Euro Format

Technical data *1				Load capacity *3	
Name	CS1	Material *2	PE	Load capacity	5000 kg
Dimensions LxWxH	1200 x 800 x 150 mm	Weight *3	12,5 - 18 kg	Dynamic load	1000 - 1500 kg
				High-rack	400 - 1400 kg

CS3 – Industrial Format

Technical data *1				Load capacity *3	
Name	CS3	Material *2	PE	Load capacity	5000 kg
Dimensions LxWxH	1200 x 1000 x 160 mm	Weight *3	16 - 21,5 kg	Dynamic load	1000 - 1500 kg
				High-rack	400 - 1400 kg

Characteristics:

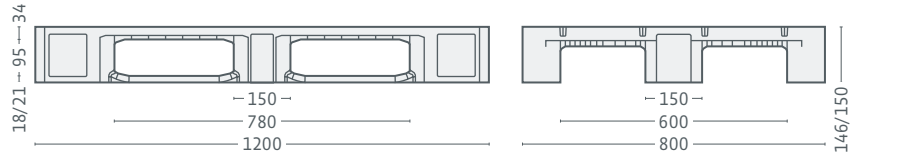
- **Multi-talent with modular principle**, as several (retrofitable) equipment options can be added to fit specific applications
- **Ideal for medium-heavy loads** such as handling of bagged goods, cardboard boxes and packaged goods in food and non-food areas
- **Standard equipped with corner lugs** to prevent shifting shrink wrap film
- **One-piece injection-moulded** with 3 runners
- **Ideal handling with forklift trucks** thanks to chamfered edges on both sides of all runners

• Standard colours:

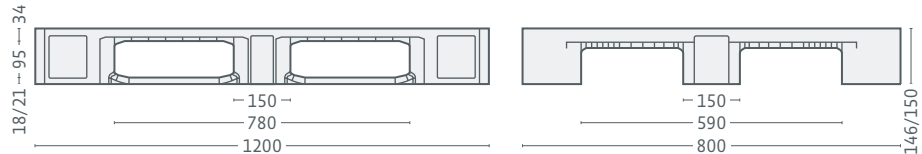
Options:

- Corrosion-protected reinforcement profiles (visible)
- Welded runners for smooth running on conveyors and high standard of hygiene
- Rim options: without, 7 mm, 22 mm, 22 mm outside (suitable for use with box systems and blisters)
- RFID transponder
- Palgrip® anti-slip runners
- ESD version: Reliably protects components and materials from electrostatic discharge
- Printing options (individual logos, lettering or numbering)

CS1 – Euro Format

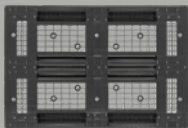


CS1 – Industrial Format





D – Robust basis



D1 – Euro Format

Technical data *1				Load capacity *3	
Name	D1	Material *2	PE	Load capacity	5000 kg
Dimensions LxWxH	1200 x 800 x 150 mm	Weight *3	12 - 15,5 kg	Dynamic load	1000 - 1500 kg
				High-rack	400 - 1250 kg

D3/D3-5 – Industrial Format

Technical data *1				Load capacity *3	
Name	D3/D3-5	Material *2	PE	Load capacity	5000 kg
Dimensions LxWxH	1200 x 1000 x 150 mm	Weight *3	14 - 19 kg	Dynamic load	1000 - 1500 kg
				High-rack	400 - 1250 kg

Characteristics:

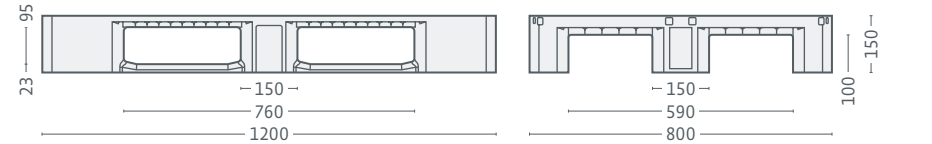
- Ideal basis for non-automated distribution processes, versatile in use
- Designed for light to medium-heavy loads
- Light yet robust construction for long-term maintenance-free use
- Particularly reliable thanks to use of high-quality materials (compared to market alternatives)
- Flexibly adaptable to area of application thanks to numerous equipment options
- One-piece injection-moulded, available as 3-runner D1 or D3 as well as 5-runner D3-5
- Ideal handling with forklift trucks thanks to chamfered edges on both sides of all runners

- Standard colours:

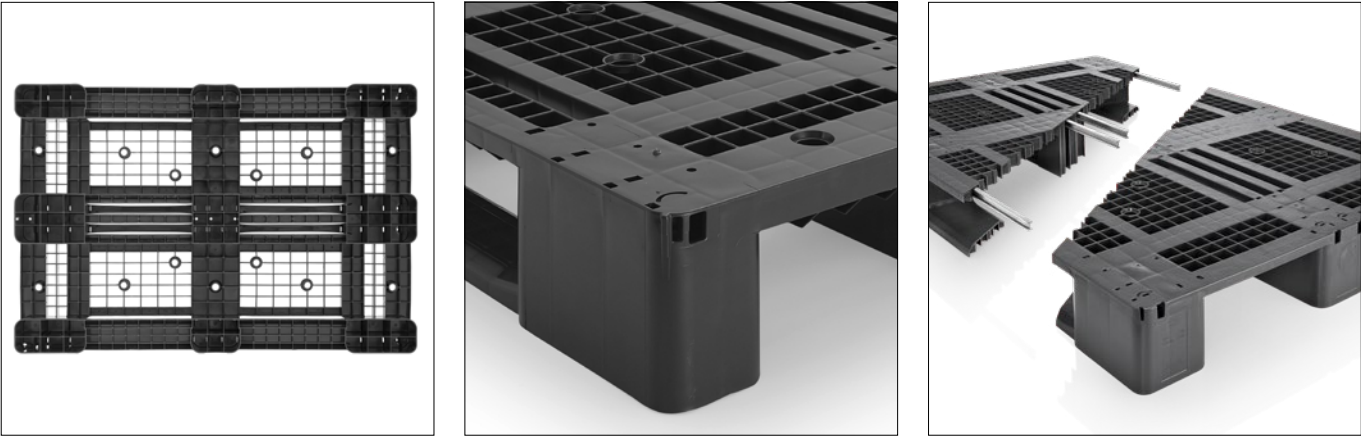
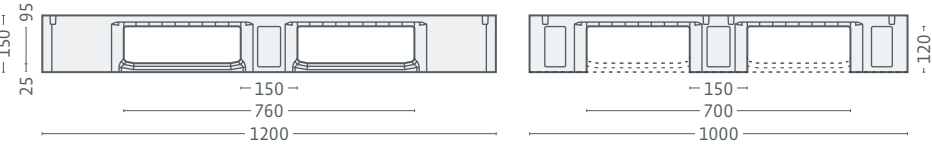
Options:

- Corrosion-protected reinforcement profiles (visible)
- Rim options: without, 7 mm, 22 mm, 22 mm outside (suitable for use with box systems and blisters)
- Pop-ups for secure empty stacking (version without rim)
- RFID transponder
- Anti-slip plugs from the top to the bottom of the deck
- Printing options (individual logos, lettering or numbering)

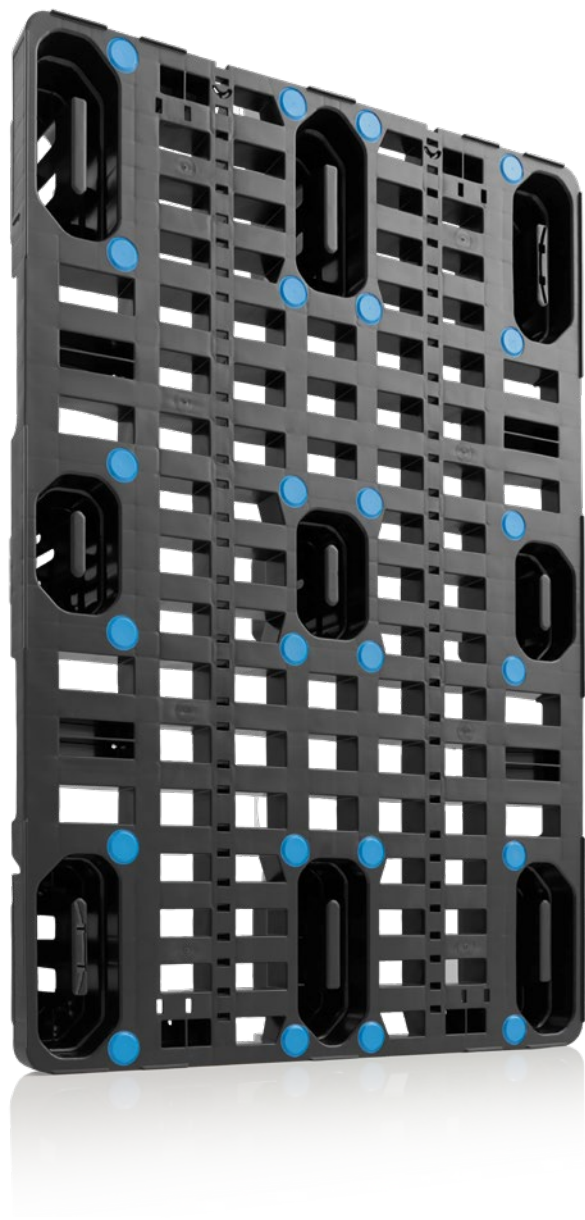
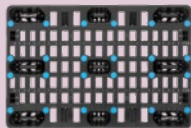
D1 – Euro Format



D3/D3-5 – Industrial Format








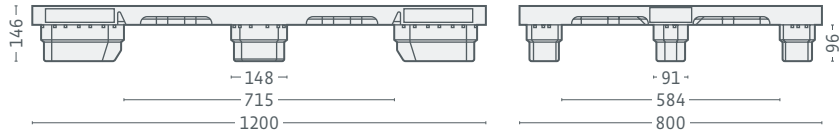
NP1 – Euro Format

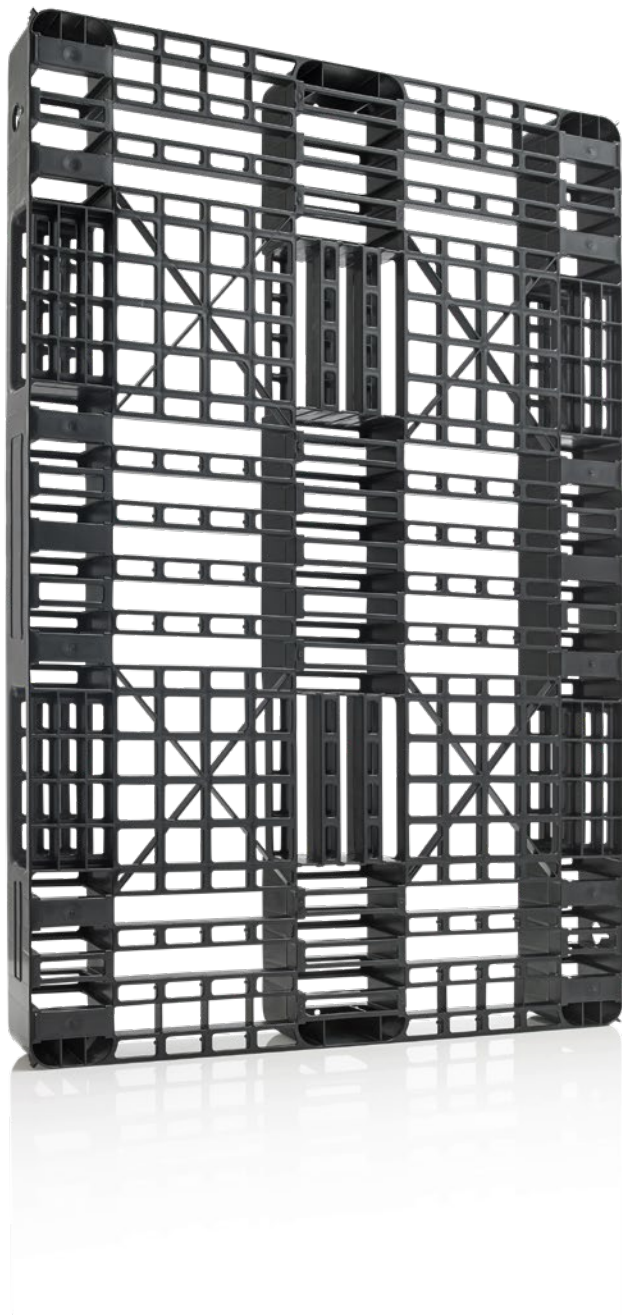
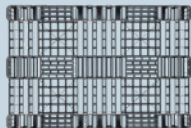
Technical data *1				Load capacity *3	
Name	NP1	Material *2	PE	Load capacity	2500 kg
Dimensions LxWxH	1200 x 800 x 146 mm	Weight *3	8,5 - 10,5 kg	Dynamic load	1000 kg
				High-rack	-

- Characteristics:**
- **Nestable 9-feet pallet**, ideal for commissioning
  - **Robust construction with low tare weight** of 8.5 kg
  - **Usable across all industries** for applications that require space-saving solutions
  - **High load safety** thanks to standard equipment with 24 injected, abrasion-resistant Palgrip® anti-slip pads on the top deck
  - **Easy de-nesting with forklift truck** thanks to step-shaped pallet feet as well as recesses in the entry openings
  - **Exact nestability** due to intelligent stacking system with locking pins
  - **Easy securing of packaging film** thanks to integrated foil slot on both 1200 mm sides
- Standard colours: 

- Options:**
- Corrosion-protected reinforcement profiles (visible)
  - Rim options: without, 4 mm
  - RFID transponder
  - Retrofittable Palgrip® anti-slip clips (lower deck)
  - Printing options (individual logos, lettering or numbering)

NP1 – Euro Format






SL1 – Euro Format

Technical data <sup>*1</sup>				Load capacity <sup>*3</sup>	
Name	SL1	Material <sup>*2</sup>	PE	Load capacity	2000 kg
Dimensions LxWxH	1200 x 800 x 120 mm	Weight <sup>*3</sup>	7 kg	Dynamic load	1000 kg
				High-rack	-

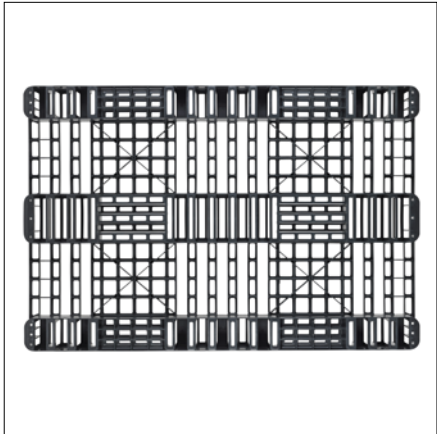
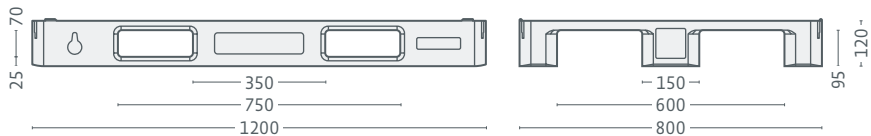
Characteristics:

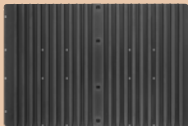
- **Lightweight pallet for light loads**, only 7 kg tare weight
  - **Ideal intermediate pallet** for commissioning and distribution thanks to low building height of just 120 mm
  - **Robust construction**, long pallet feet and ribbed deck give stability
  - **No shifting of packaging film** thanks to standard equipment with corner lugs as well as an integrated film slot in one of the pallet feet
  - **One-piece injection-moulded** with 3 runners
- Standard colours: 

Options:

- Rim options: without, 7 mm, 12 mm outside
- Printing options (individual logos, lettering or numbering)


SL1 – Euro Format



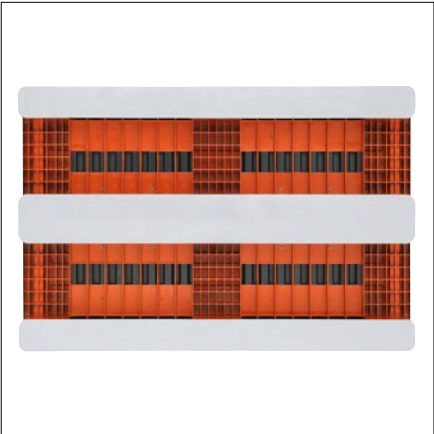
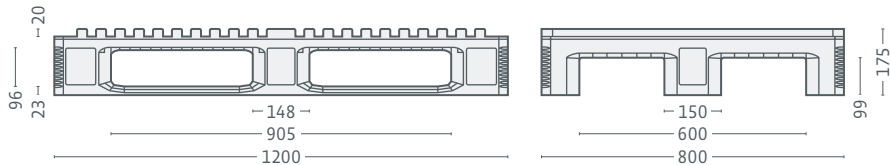


Non-Stop Pallet – Euro Format

Technical data <sup>*1</sup>				Load capacity <sup>*3</sup>	
Name	Non-Stop	Material <sup>*2</sup>	PE	Load capacity	7500 kg
Dimensions LxWxH	1200 x 800 x 175 mm	Weight <sup>*3</sup>	20 kg	Dynamic load	1000 kg
				High-rack	-

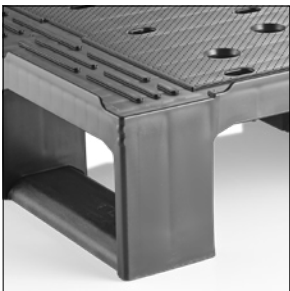
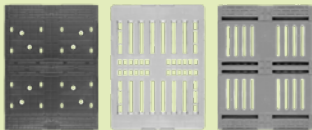
- Characteristics:
- **Specially developed for the automated printing industry** and for use with Heidelberger printing machines
  - **Guaranteed uninterrupted logistics processes** for delivery and removal of paper stacks in all standard formats
  - **Error-free removal of stacks via the Non-Stop stacker** (computing system) of the printing machine thanks to ideal arrangement of the bars on the deep-drawn top deck
  - **Welded runners for running smoothness** in automated systems
  - **One-piece injection-moulded with 3 runners and riveted deep-drawn plate**
- Standard colours: 


Non-Stop Pallet – Euro Format

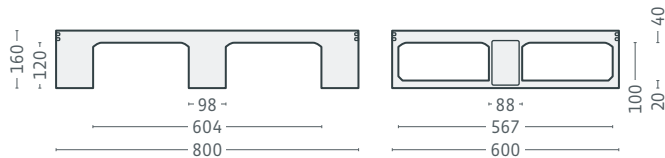




# Half Pallets – Full performance, half the size

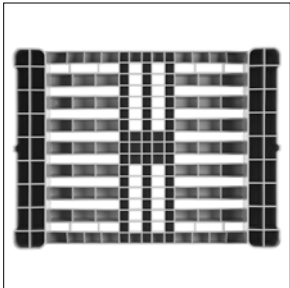



- D2**
- Characteristics:**
- **Versatile and durable plastic alternative** to the Düsseldorf pallet
  - **Secure stacking of empty pallets** thanks to patented “Lego structure”
  - **High runner stability and bending strength**, ideal for roller and chain conveyors and automated warehouse technology
  - **One-piece injection-moulded** with 3 runners
  - **Safe handling with forklift trucks** thanks to elevated entry openings
- Standard colours: 
- Options:**
- Rim options: without, 7 mm, 24 mm outside
  - Anti-slip plugs from the top to the bottom of the deck
  - ESD version: Reliably protects components and materials from electrostatic discharge
  - Printing options (individual logos, lettering or numbering)

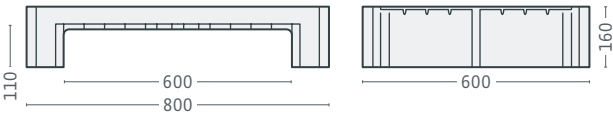


D2 – Half Pallet

Technical data <sup>*1</sup>				Load capacity <sup>*3</sup>	
Name	D2	Material <sup>*2</sup>	PP	Load capacity	2000 kg
Dimensions LxWxH	800 x 600 x 160 mm	Weight <sup>*3</sup>	8,5 kg	Dynamic load	500 kg
				High-rack	-



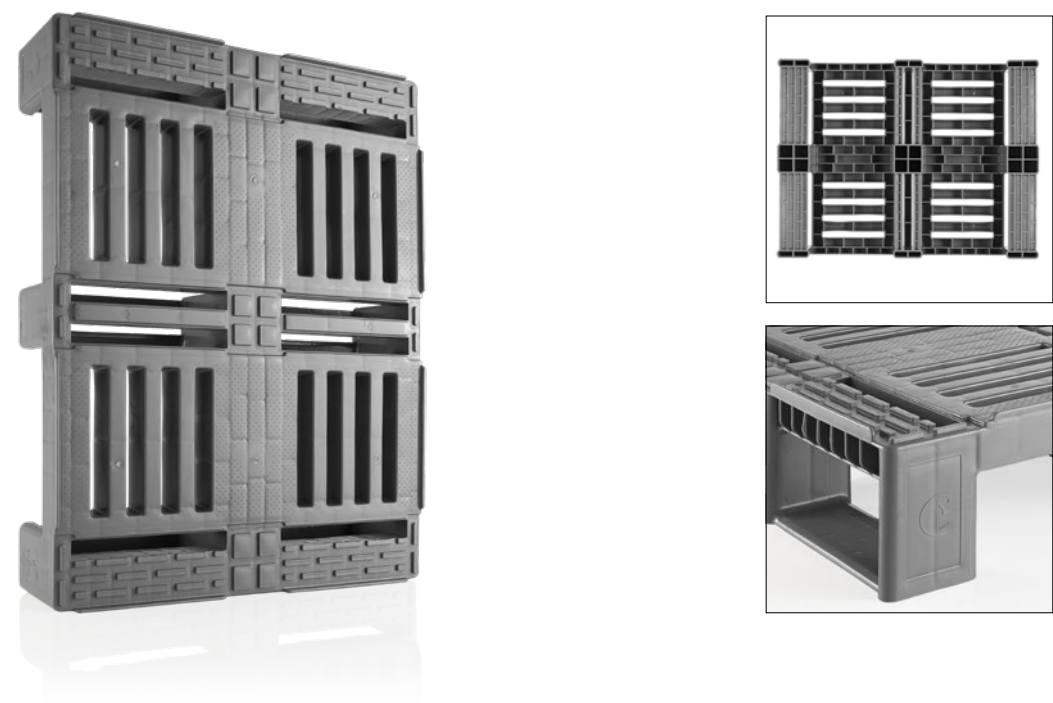
- H2**
- Characteristics:**
- **Usable with standardised box systems (e.g. E-boxes)** as well as all other common box systems
  - **Ideal complement to H1** Euro pallet
  - **Food-safe** and thus perfect for use in hygienic-sensitive areas
  - **One-piece injection-moulded** with 2 runners
  - **2-way pallet**, accessible on the long sides
- Standard colours: 
- Options:**
- Rim options: without, 7 mm
  - Central box retainer
  - Printing options (individual logos, lettering or numbering)




H2 – Half Pallet

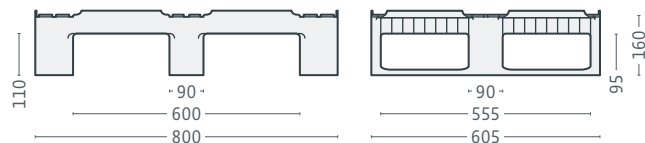
Technical data <sup>*1</sup>				Load capacity <sup>*3</sup>	
Name	H2	Material <sup>*2</sup>	PE	Load capacity	2000 kg
Dimensions LxWxH	800 x 600 x 160 mm	Weight <sup>*3</sup>	9 kg	Dynamic load	500 kg
				High-rack	-

# Half Pallets – Full performance, half the size



- CR2**  
**Characteristics:**
- **Lightweight multi-trip pallet**, ideal for non-automated distribution processes
  - **Safe handling** thanks to interlocking system of top deck and runner profile
  - **One-piece injection-moulded** with 3 runners
  - **Ideal handling with forklift trucks** thanks to low runner height and chamfered edges on both sides of all runners
- Standard colours: 

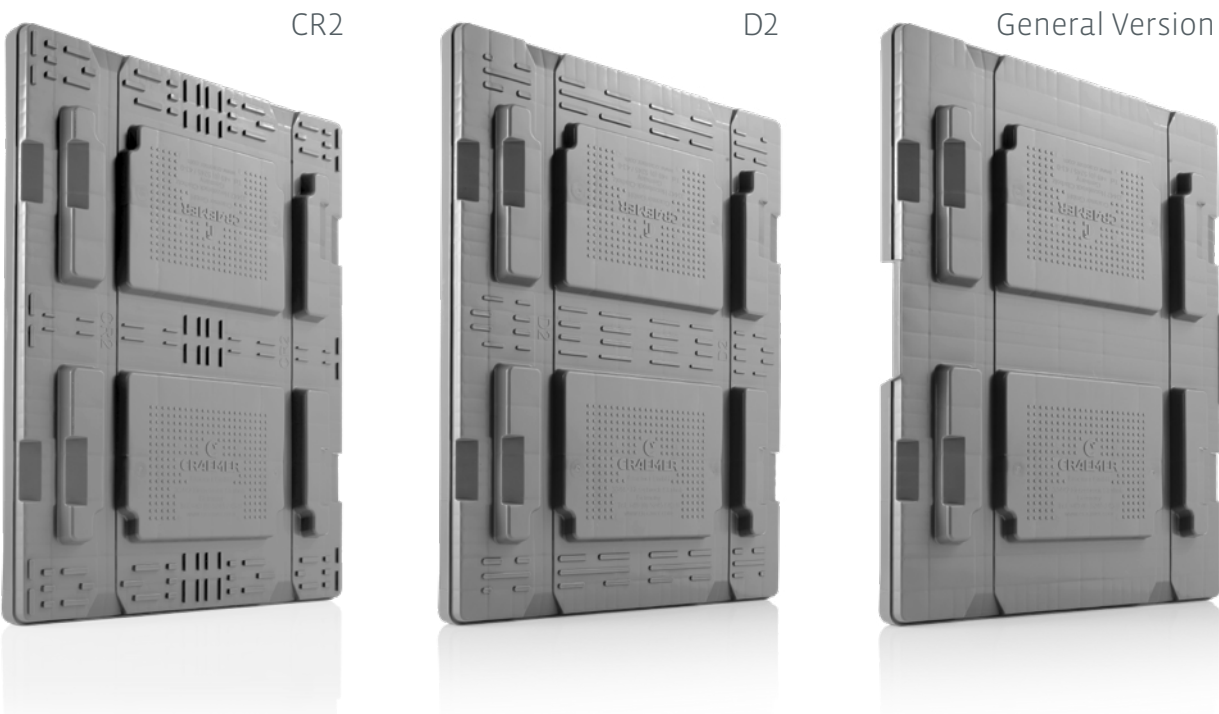
- Options:**
- Rim options: without, 7 mm, 22 mm
  - ESD version: Reliably protects components and materials from electrostatic discharge
  - Printing options  
(individual logos, lettering or numbering)





CR2 – Half Pallet

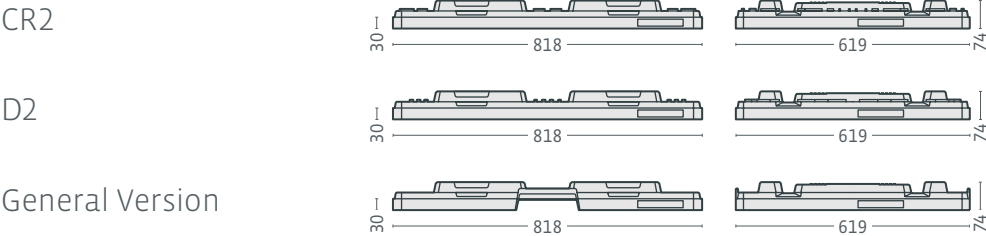
Technical data *1				Load capacity *3	
Name	CR2	Material *2	PE	Load capacity	2000 kg
Dimensions LxWxH	800 x 600 x 160 mm	Weight *3	7,5 kg	Dynamic load	500 kg
				High-rack	-

# Pallet Lids – Protecting every load



- Characteristics:**
- **Reliable protection of transported goods**, minimises product damage
  - **Usable with all standard reusable boxes** such as KLTs and E-boxes
  - **Stackable** for space-saving storage and empty transportation
  - **Reliably secured packing units** thanks to standard equipment with strapping grooves
  - **Available in three versions:** CR2 version, D2 version as well as a generally compatible version
- Standard colours:  

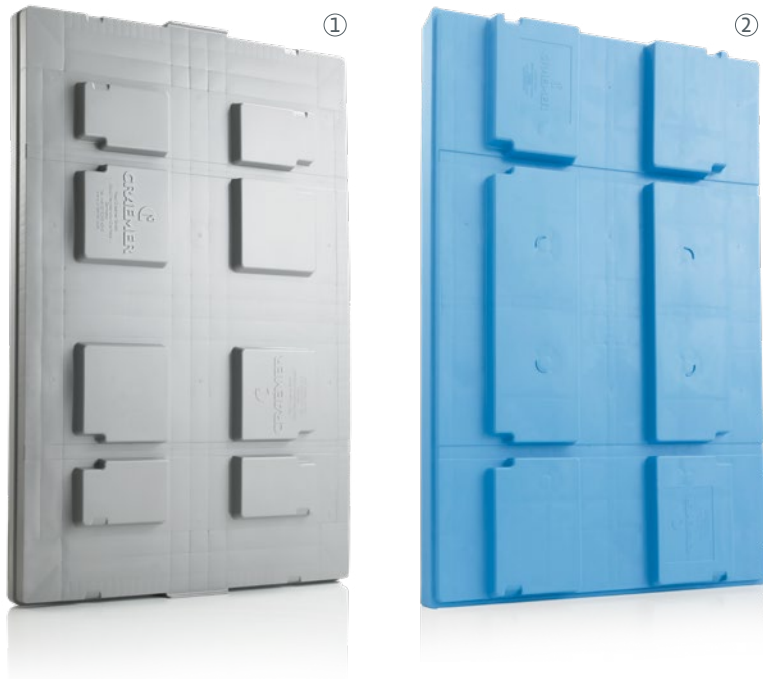
- Options:**
- Printing options (individual logos, lettering or numbering)



Pallet Lid – Half Pallet Format

Technical data *1			
Name	Pallet Lid – Half Pallet Format	Material *2	PE
Dimensions LxWxH	818 x 619 x 74 mm	Weight *3	2,8 kg

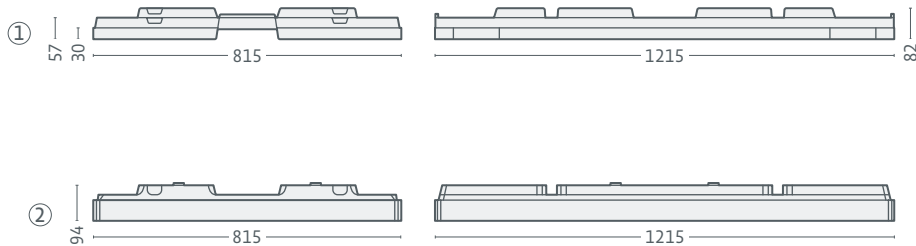
# Pallet Lids – Protecting every load



- Characteristics:**
- **Reliable protection of transported goods**, minimises product damage
  - **No shifting of pallet when stacked on lid** thanks to retainer on 800 mm side ①
  - **Stack-compatible with VDA lid ②**
  - **Usable with all standard reusable boxes** such as KLTs and E-boxes
  - **Stackable** for space-saving storage and empty transportation
  - **Reliably secured packing units** thanks to standard equipment with strapping grooves

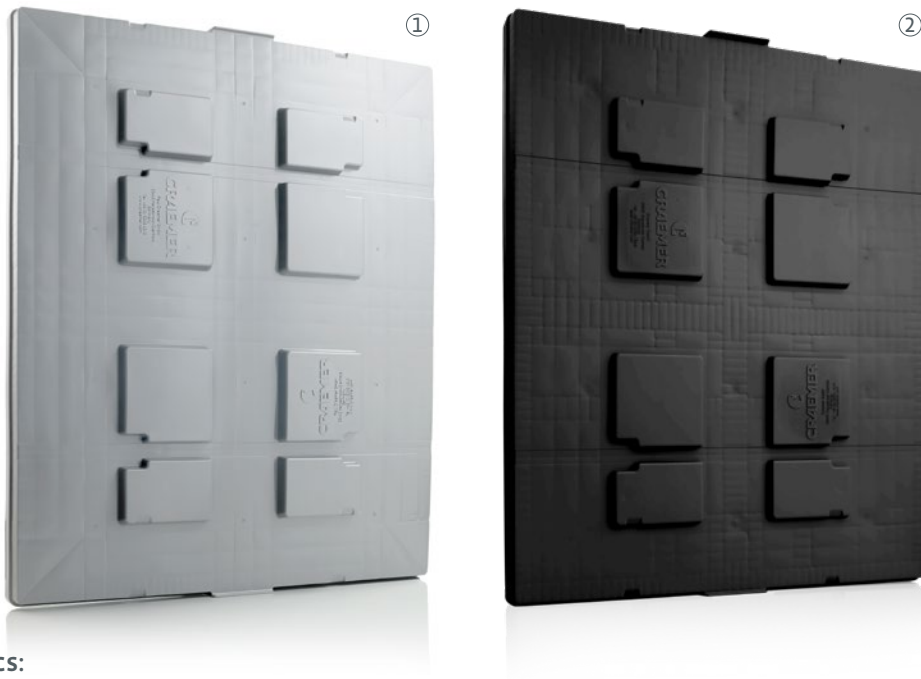
• Standard colours:    

- Options:**
- RFID transponder
  - Printing options (individual logos, lettering or numbering)



## Pallet Lid – Euro Format

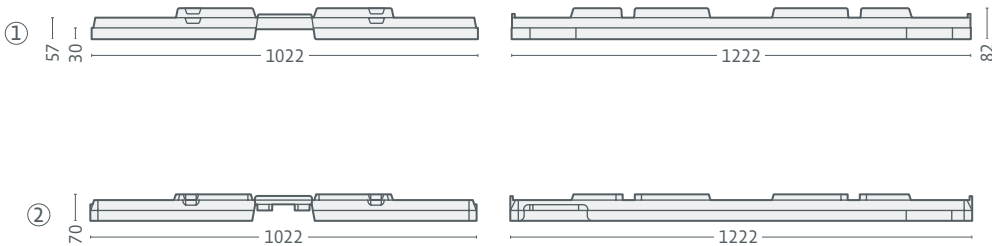
Technical data *1			
Name	Pallet Lid Euro Format	Material *2	① PE ② PP
Dimensions LxWxH	① 1215 x 815 x 82 mm ② 1215 x 815 x 94 mm	Weight *3	① 5,5 kg ② 5 kg



- Characteristics:**
- **Reliable protection of transported goods**, minimises product damage
  - **No shifting of pallet when stacked on lid** thanks to retainer on 1000 mm side
  - **Usable with all standard reusable boxes** such as KLTs and E-boxes
  - **Stackable** for space-saving storage and empty transportation
  - **Reliably secured packing units** thanks to standard equipment with strapping grooves
  - **Flat version** with reduced building height ②

• Standard colours:   

- Options:**
- RFID transponder
  - Printing options (individual logos, lettering or numbering)

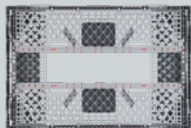


## Pallet Lid – Industrial Format

Technical data *1			
Name	Pallet Lid Industrial Format	Material *2	PE
Dimensions LxWxH	① 1222 x 1022 x 82 mm ② 1222 x 1022 x 70 mm	Weight *3	① 6,8 kg ② 6,5 kg



# Pallet Collars – Fold open, fold closed



## CC1 – Euro Format

Technical data <sup>*1</sup>				Load capacity <sup>*3</sup>	
Name	CC1 Pallet Collar	Material <sup>*2</sup>	PE	Stacking load	500 kg
External dimensions LxWxH	1220 x 815 x 300 mm	Volume	260 l	Payload	–
Internal dimensions LxWxH	1160 x 750 x 300 mm	Weight <sup>*3</sup>	7,8 kg	Dynamic load	–

## CC2 – Half Pallet Format

Technical data <sup>*1</sup>				Load capacity <sup>*3</sup>	
Name	CC2 Pallet Collar	Material <sup>*2</sup>	PE	Stacking load	400 kg
External dimensions LxWxH	814 x 618 x 290 mm	Volume	122 l	Payload	–
Internal dimensions LxWxH	754 x 561 x 290 mm	Weight <sup>*3</sup>	5,4 kg	Dynamic load	–

### Characteristics:

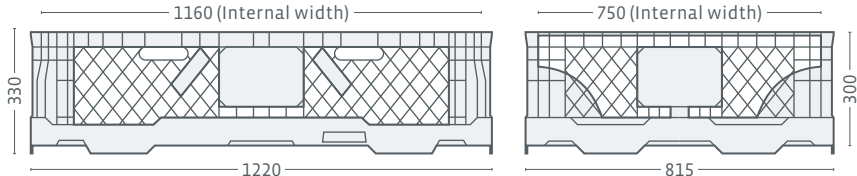
- **Foldable frame with 75% volume reduction** for space-saving storage
- **Efficient vehicle utilisation** during empty transports thanks to double or triple stacking
- **Compatible with almost all pallets**
- **Easy locking mechanism**
- **Safe stacking** thanks to interlocking
- **Integrated handles**
- **Labelling field**
- **Transponder bracket**

- Standard colours:

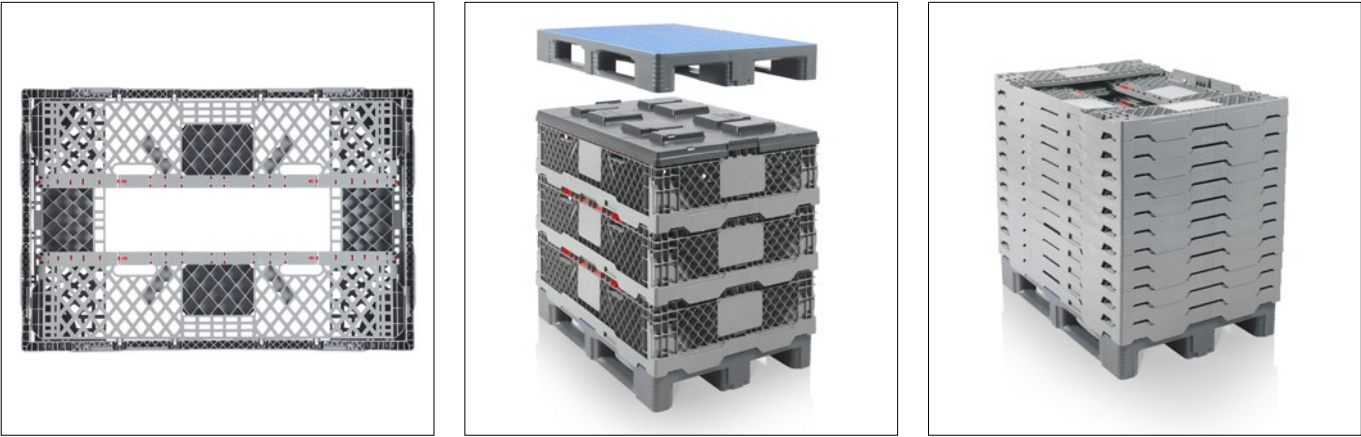
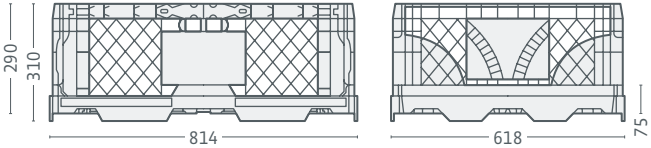
### Options:

- RFID transponder
- Rim options: without, 10 mm
- Printing options (individual logos, lettering or numbering)

CC1



CC2



# The right plastic pallet for every application

Pallets are a decisive factor for cost-efficient supply chains and smooth intralogistics processes. Selecting the right load carrier is, however, an often underestimated aspect. And yet optimised load carrier management and the investment in a load carrier that fits the application perfectly holds great potential for increasing efficiency. The more complex place of operation and application are, the higher the demands on the daily performance of a pallet.

The comprehensive portfolio at Craemer includes high-quality plastic pallets in half, Euro, Industrial and Inch-size. With a total of ten pallet families, Craemer is sure to have the right pallet for every application. Determining the perfect pallet for an application depends on numerous factors, therefore each project is considered individually by our team of experts.

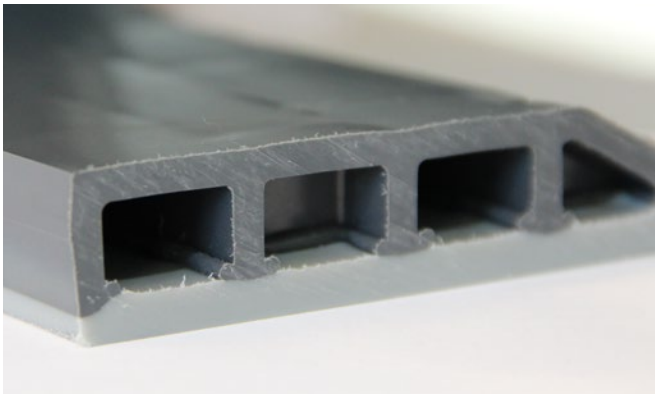
Craemer plastic pallets are mostly injection-moulded in one piece from only high-quality PE. This high manufacturing quality enables repair- and maintenance-free use. Craemer plastic pallets can thus offer an extremely long service life and remain reliable in daily handling, even after many trips. They have proven their worth a million times over and customers from around the world and from a variety of industries trust the consistent high quality. Craemer plastic pallets are particularly effective and established in closed-loop operations where automation, process reliability as well as cleanliness and hygiene play important roles.



The price-performance comparison is valid for Euro and Industrial size pallets in the respective basic version and can vary depending on the application. Detailed information on each pallet family can be found on the previous pages.

# Advantages with Craemer plastic pallets

- Extremely long life-time allows a high number of pallet trips
- Processing of high-quality materials for long-term repair- and maintenance-free use
- High manufacturing quality, precision and accuracy
- Low levels of deflection, even at high loads
- Excellent running smoothness on conveyor systems and in automated warehouses
- High economic efficiency thanks to innovative design and high-quality production processes
- Temperature-resistant from deep freezing to extreme heat
- Dimensionally stable and colour-fast due to use of UV-stabilisers



High-quality welding connections



Palgrip® anti-slip technology



Robust runner connections



Corrosion-protected reinforcement profiles



Welded runners for conveyor technology and hygiene



Numerous rim options



Palgrip® is a unique anti-slip technology developed by Craemer, which offers reliable load safety, slip resistance and smooth logistics processes thanks to its high-quality grain structure. Depending on the pallet family it is possible to equip the pallet deck with a full-surface anti-slip deck, anti-slip plates or pads. The abrasion-resistant grain structure ensures secure hold even in damp conditions or an inclined position.

The optionally available Palgrip® anti-slip clips on the underside of the deck increase slip resistance in daily use with forklift trucks. Craemer plastic pallets with Palgrip® anti-slip runners offer unparalleled running smoothness and track accuracy for an error-free use on turntables, in high racking, on roller conveyors or on chain conveyors.

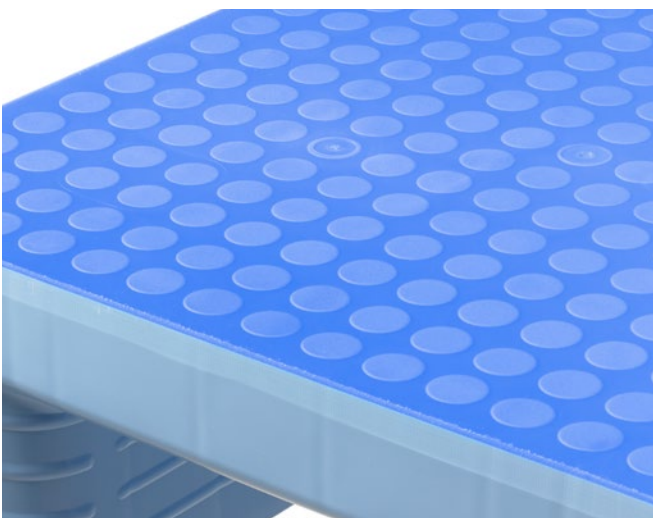


The Palgrip® anti-slip coating is resistant to cold and heat, from -30°C to +40°C.



Thanks to their high-quality grain structure, Craemer Palgrip® anti-slip plates offer absolute slip resistance, even in high humidity.

Depending on the pallet family, Craemer plastic pallets can be equipped with different Palgrip® options:



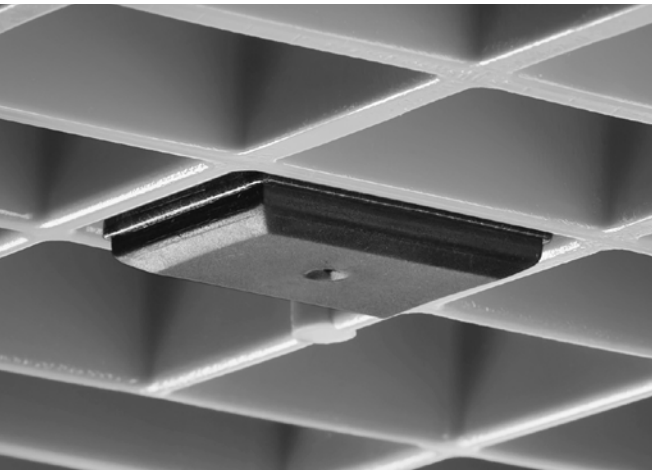
Full-surface Palgrip® anti-slip deck



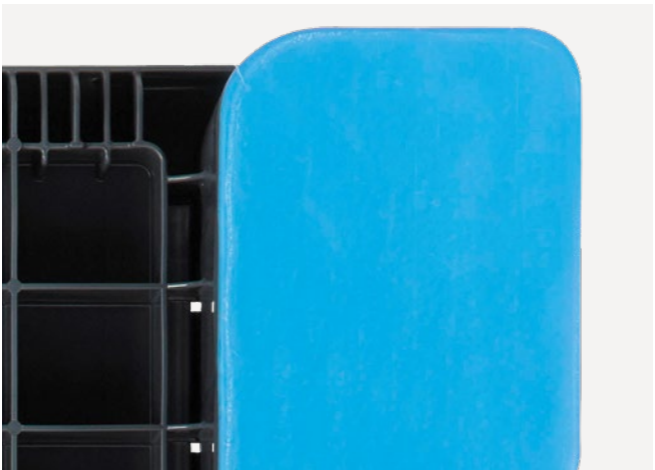
Palgrip® anti-slip strips on the deck



Palgrip® anti-slip pads on the deck



Palgrip® anti-slip clips on the underside of the deck



Palgrip® anti-slip runners



RFID Technology – A valuable plus in terms of profitability

RFID technology enables the wireless exchange of data between a transponder (tag) as a data carrier and a reading device (reader) by means of electromagnetic fields. A transponder is a collective term for data carriers which enable contact free reading. They combine the functions of a data carrier (with an antenna) and a data memory. The information flowing between transponders and readers is evaluated in databases.

Features

- Non-visible reading and writing
- Negative interference allows the communication of several transponders in sequence, and this way creates the prerequisite for bulk reading
- Dynamic data management: on the transponders, data can be stored, changed, added and deleted at any time
- Flexible data management directly on the load carrier, pallet, and/or product (decentralised data storage)
- Data transfer between pallet and reader: wireless, contact-free, without direct visual contact



Transponders:	A	B	C
Protocol:	EPC Class 1 Gen 2 ISO/IEC 1800 6C	EPC Class 1 Gen 2 V2	EPC Class 1 Gen 2 ISO 18000-6C
Chip:	Alien Higgs 3/4	Monza R6-P	Impinj Monza 4D
Memory EPC:	Up to 496 bits	Up to 128 bits	128 bit
Memory TID:	64 bit	96 bit	Up to 96 bits
Free data memory/user:	512 bits	Up to 64 bits	32 bit
Operating temperature:	-40 °C to 85 °C	-40 °C to 85 °C	-40 °C to 85 °C
Bulk reading:	Yes	Yes	Yes
Range with plastic:	Up to 9 metres	Up to 9 metres	Up to 12 metres
Working frequency:	860 to 960 MHz	860 to 930 MHz	860 to 960 MHz

Craemer is committed to quality and sustainability

This begins with the general goal of manufacturing durable and multi-use products for the markets. For this, we only use high-quality PE that has been tested to high quality standards and released for processing.

This material offers high impact resistance, stability and durability. Compared to other plastics, PE can be used without breakages, even at low and sub-zero temperatures. It is highly resistant to acids, alkaline solutions and chemicals.

Return of used plastic products

Part of our company philosophy has always been the sustainable and future-oriented management of natural resources. This is why our responsible interaction with the environment includes the take-back of products from circulation once they have reached a certain age or are no longer in good working order.

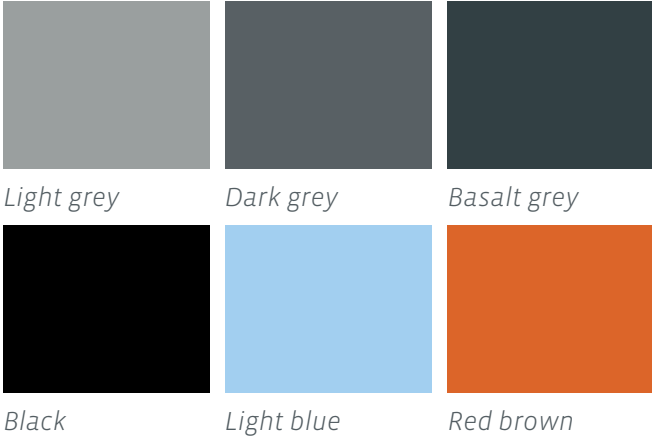
Craemer products have a long service life, many of our customers use our pallets 10 years or even longer, but even for Craemer products, there comes a time to renew the old. Just contact us and we will be happy to help. It is a good contribution to sustainable trade to start the recycling life-cycle again with this high-grade material.



Standard and special colours

Next to our standard colours, all Craemer products are of course also available in your own corporate colour. We offer a large selection of special colours for this purpose.

Overview of our standard colours



Labelling

Depending on the quantity, Craemer products can be individualised with lettering, logos and numbering. Positioning upon consultation.



Logo (hot stamping)    Barcode label

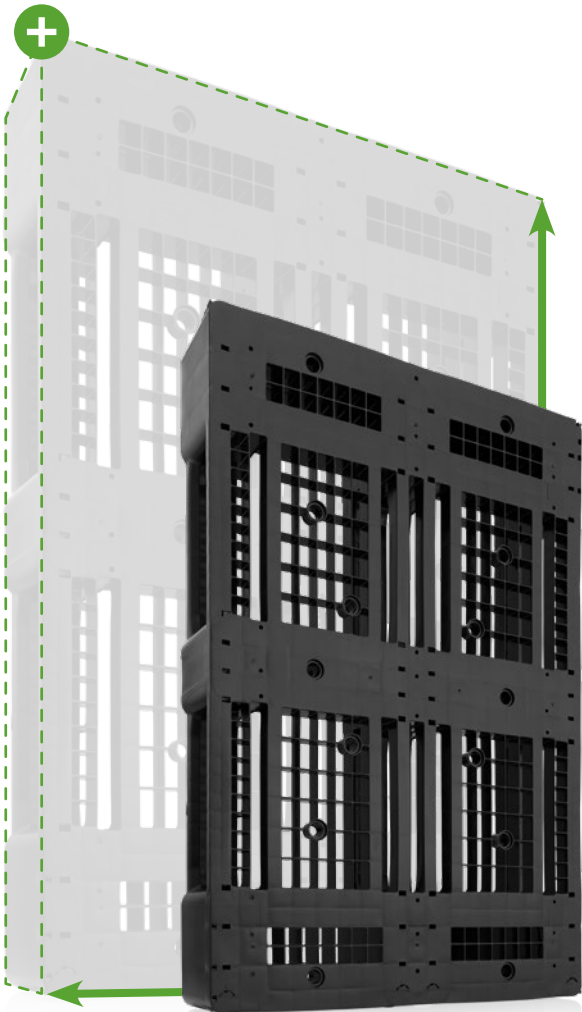


Lettering or sequential numbering (hot stamping)    Injection-moulded logo

Tailor-made plastic pallets from Craemer:

Perfect for special applications

Smooth processes require a high level of flexibility. Our answer to this: tailor-made plastic pallets in a variety of special dimensions. Thanks to more than 60 years of experience in the construction and production of high-quality plastic pallets, Craemer can respond to individual requirements and offer customised, high-quality solutions. From extensions, size reductions or widening - the butt welding process allows an exact adaptation to customer requirements. Additional rims or frames are also possible.



Technical data \*1:

All technical data include characteristic features, which have been tested under specially defined conditions. Varying data may result from different conditions of usage such as loading method, prevailing temperature and length of storage time. All data and specific information are subject to change without notice. Our service team is pleased to be at your disposal to check the specific requirements of your individual application.

Material \*2:

Our service team is pleased to be at your disposal if you require exact information about material compositions.

Weight and Load capacity \*3:

The values stated are the respective minimum and maximum weights and load capacities. The values may vary depending on the equipment options (reinforcement profiles, welded runners, number of runners).

**Static Load:** Resistance to pressure on a flat ground surface and an evenly distributed load at a room temperature of approx. 20 °C.  
**Dynamic load:** On a forklift with an evenly distributed load at a room temperature of approx. 20 °C.  
**In racking system:** Evenly distributed load (sacks) along the longitudinal sides. Resting on two supports for over 100 h at a room temperature of approx. 20 °C.

EURO H1 and H1:

**In racking system:** Evenly distributed load (E2 boxes or Euro fish boxes) along the longitudinal sides. Resting on two supports for over 100 h at a room temperature of approx. 20 °C.

CC1 and CC2:

**Stacking load:** With a maximum stacking height of 3 frames and evenly distributed load at approx. 20 °C room temperature.

The Craemer Group is one of the world's leading manufacturers of durable logistics solutions with more than 60 years of experience in plastics processing. The portfolio includes plastic pallets for a wide variety of requirements and a wide range of transport and storage containers – from stacking boxes, round containers and tubs to pallet boxes and large wheelie bins (MGB type). All Craemer products are manufactured of high-quality polyethylene and excel with their tried and tested quality.

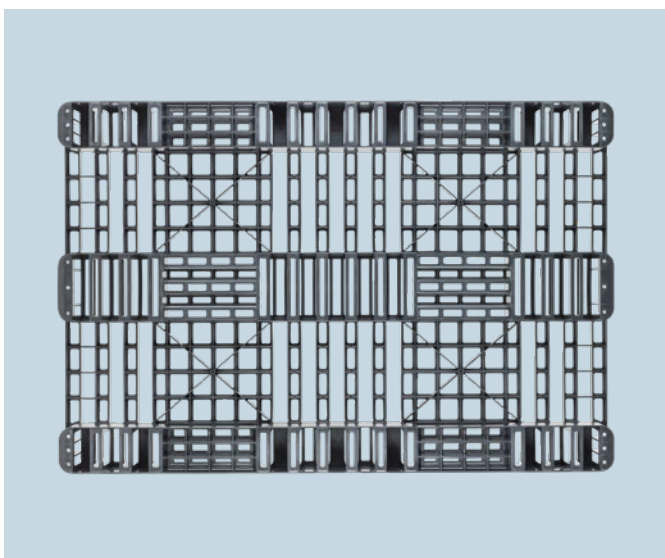
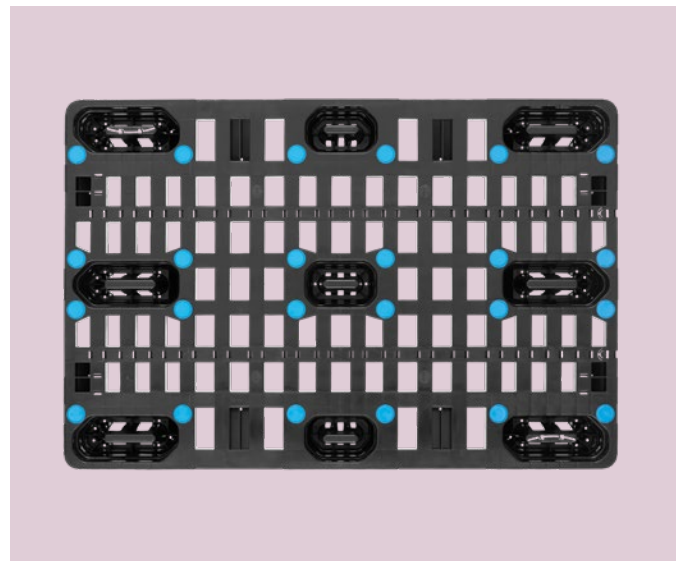
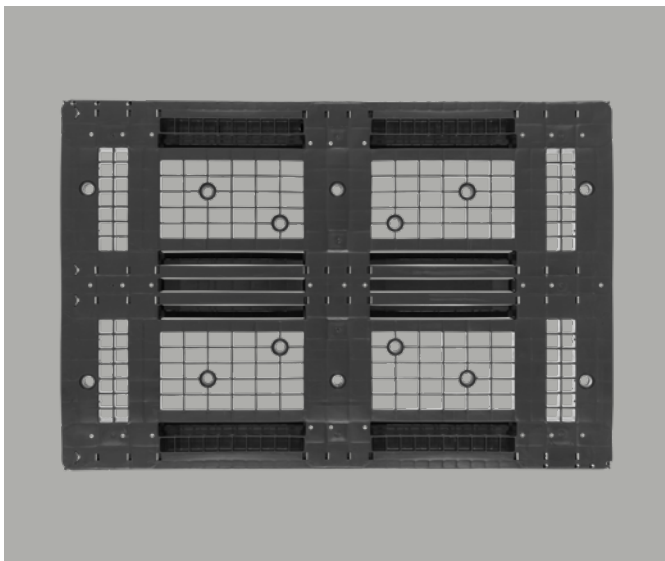
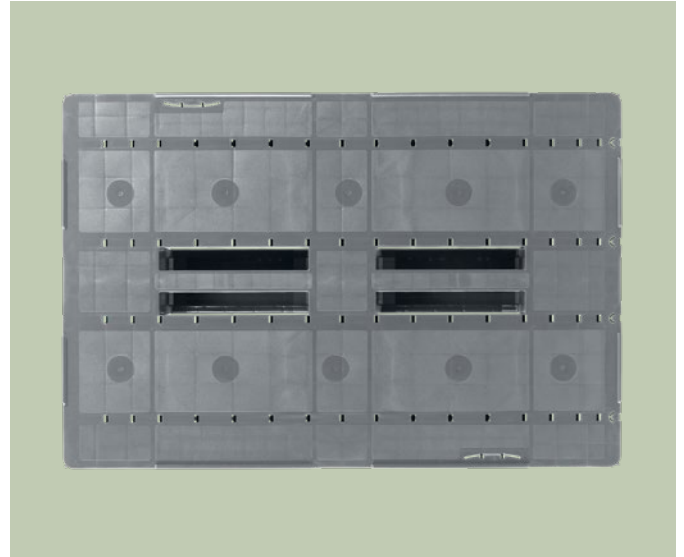
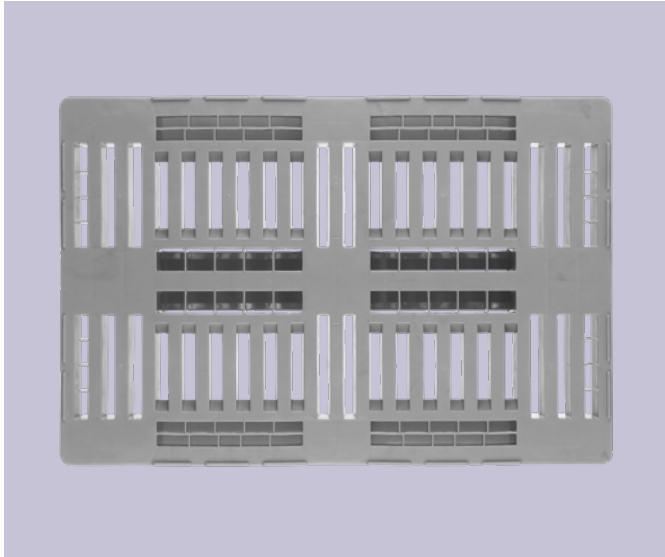


**Craemer GmbH**

Brocker Straße 1  
33442 Herzebrock-Clarholz | Germany  
Tel.: +49 5245 43-0  
E-Mail: info@craemer.com

**Craemer UK Ltd**

Craemer House | Hortonwood 1  
Telford, Shropshire TF1 7GN | United Kingdom  
Tel: +44 1952 6078-00 | Fax: +44 1952 6078-01  
E-mail: sales.uk@craemer.com



[www.craemer.com](http://www.craemer.com)  
[www.craemer.co.uk](http://www.craemer.co.uk)